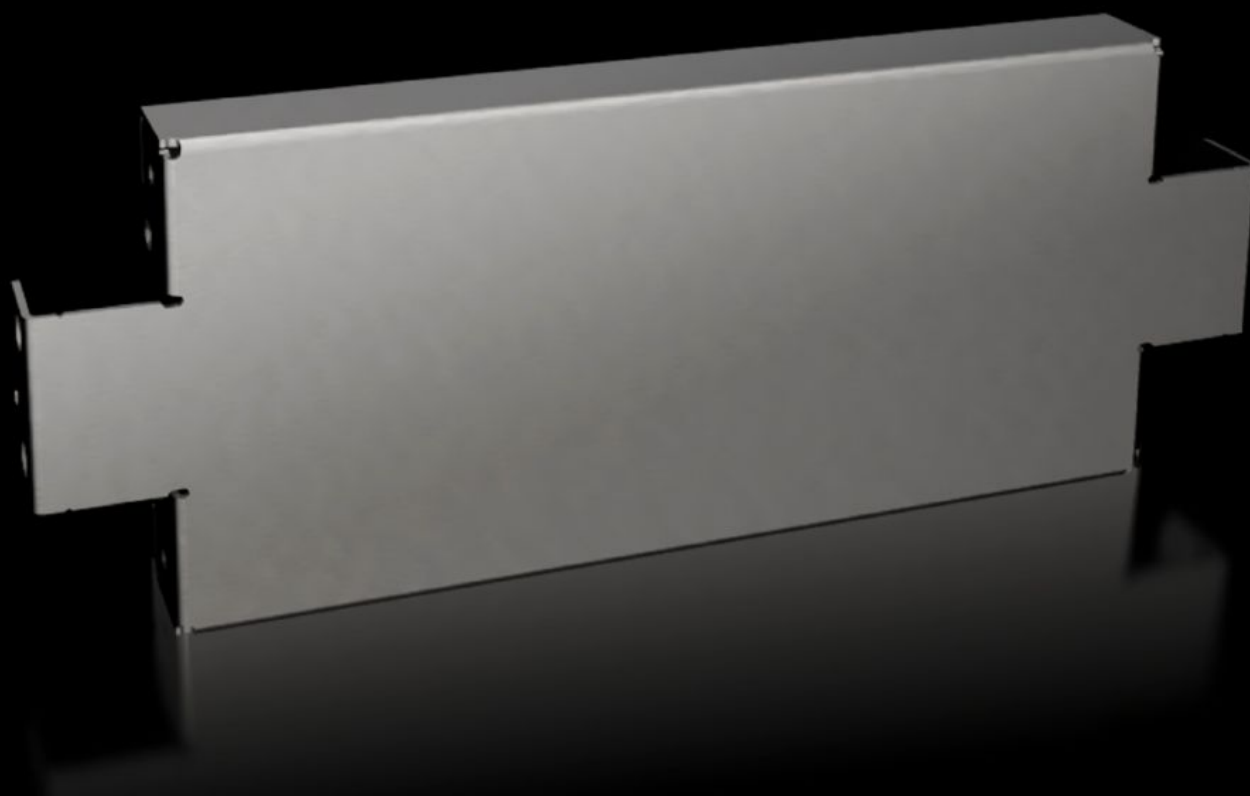


Rittal – The System.

Faster – better – everywhere.



VX 8620.070

Base/plinth trim panels, side, 100 mm, stainless steel

State: 7/12/2025 (Source: rittal.com/us-en)

ENCLOSURES

POWER DISTRIBUTION

CLIMATE CONTROL

IT INFRASTRUCTURE

SOFTWARE & SERVICES

FRIEDHELM LOH GROUP



VX 8620.070 - Base/plinth trim panels, side, 100 mm, stainless steel For VX base/plinth systems

Stainless steel base/plinth trim panels are used depth-wise for laterally closing a base/plinth unit or for the inner fitting of aligned base/plinths. The 100 mm high trim panels can also be used and combined in 200 mm high base/plinths.

Features

Model No.	VX 8620.070
Product description	For side completion of a base/plinth unit and for additional stabilization or the interior installation of baying bases. One 200 mm high or two 100 mm high trim panels can optionally be used to 200 mm high base/plinths.
Material	Stainless steel 1.4301 (AISI 304)
Surface finish	Brushed, grain 400
Supply includes	Assembly components
Note	The components of the first generation base/plinth system cannot be combined with the components of the second generation base/plinth system
Dimensions	Height: 100 mm Height: 3.94 "
Suitable for	Depth: = 400 mm Depth: = 15.7 "
Type rating according to UL 50E	Type 1 Type 3R Type 4 Type 4X Type 12
Weight/packaging unit	1.59 kg 3.5 lb.
Packaging unit	2 pc(s).
Net weight	1

Features

Gross weight	1.028
Customs tariff number	94039910
EAN	4028177922372
ETIM 9	EC000721
ECLASS 8.0	27182003

Approvals

Approvals	UL + C-UL - FTTA
-----------	------------------