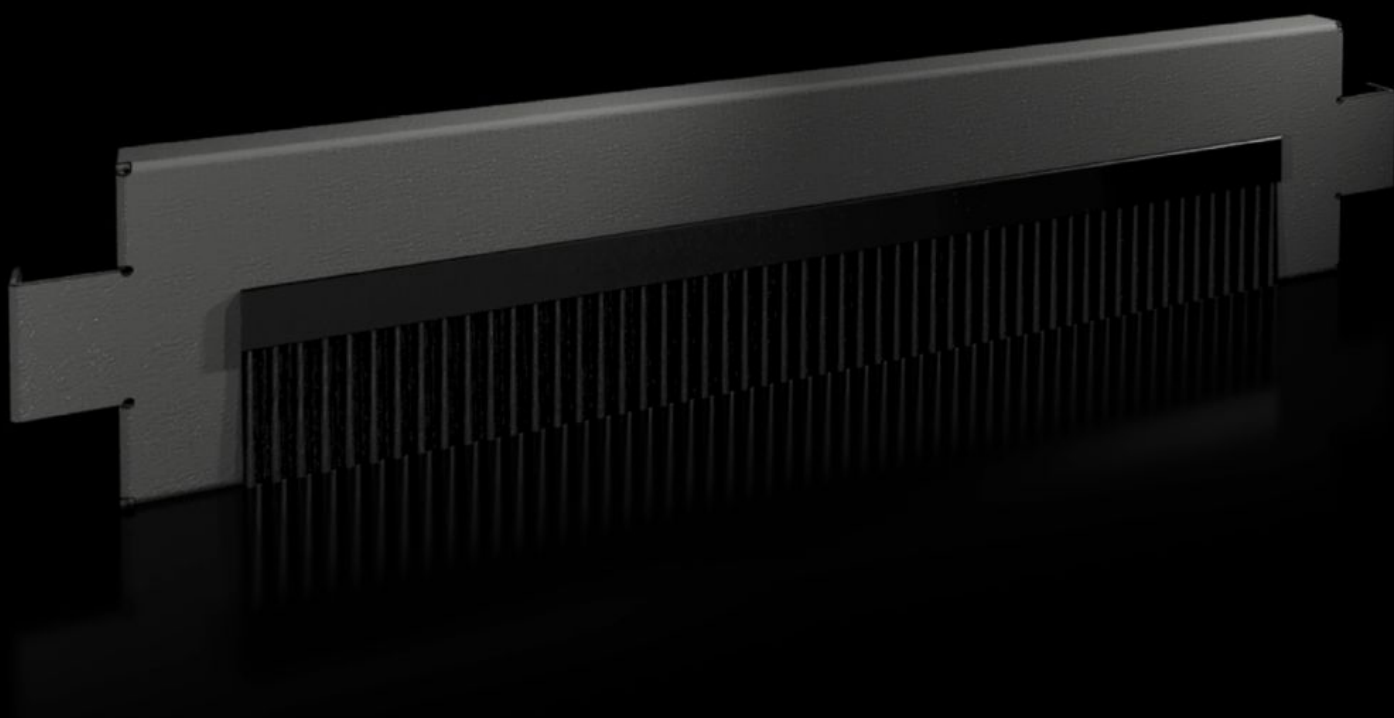


# Rittal – The System.

Faster – better – everywhere.



## VX 8620.092

## Base/Plinth Trim Panels with Brush Strip

State: 7/14/2025 (Source: [rittal.com/us-en](https://www.rittal.com/us-en))

ENCLOSURES

POWER DISTRIBUTION

CLIMATE CONTROL

IT INFRASTRUCTURE

SOFTWARE & SERVICES

FRIEDHELM LOH GROUP



# VX 8620.092 - Base/Plinth Trim Panels with Brush Strip

## For VX base/plinth systems

The 100 mm high base/plinth trim panels can be used in the depth or the width for cable entry into the base/plinth. The trim panels can also be used in 200 mm high base/plinths and they can be combined with other 100 mm high trim panels.

## Features

Model No.	VX 8620.092
Product description	For cable entry into the base/plinth. If the base/plinth height is 200 mm, one or two trim panels with brush strips can optionally be used. The VX base/plinth system's complete symmetry allows the trim panels with brush strips to be mounted either at the front, rear or side of the base/plinth corner piece.
Material	Base/plinth trims: Carbon steel Brush strip: Plastic, self-extinguishing
Color	RAL 9005
Supply includes	Assembly components
Dimensions	Height: 100 mm Height: 3.94 "
Suitable for	Enclosure type: VX TX CableNet Suitable for width/depth: 600 mm Enclosure type: VX TX CableNet Suitable for width/depth: 23.6 "
Type rating according to UL 50E	Type 1, 12
Weight/packaging unit	1.3 kg 2.9 lb.
Packaging unit	2 pc(s).
Net weight	1.1
Gross weight	1.3

# Features

Customs tariff number	94039910
EAN	4028177922457
E-Number Sweden	E3465075
ETIM 9	EC000721
ECLASS 8.0	27182003

# Approvals

Approvals	UL + C-UL - FTTA
-----------	------------------