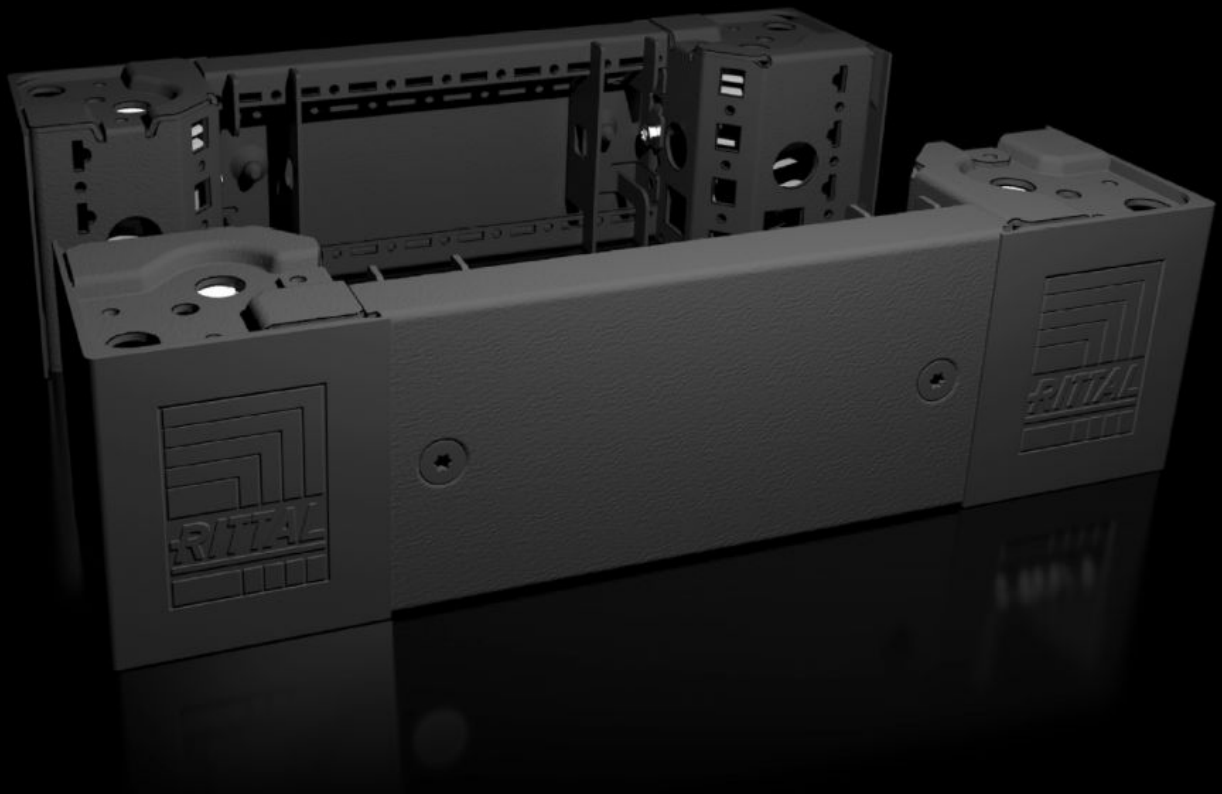


# Rittal – The System.

Faster – better – everywhere.



## VX 8640.001

# Base/plinth corner pieces with base/plinth trim panels, front and rear, 100 mm

State: 5/1/2026 (Source: [rittal.com/us-en](http://rittal.com/us-en))

ENCLOSURES

POWER DISTRIBUTION

CLIMATE CONTROL

IT INFRASTRUCTURE

SOFTWARE & SERVICES

FRIEDHELM LOH GROUP



# VX 8640.001 - Base/plinth corner pieces with base/plinth trim panels, front and rear, 100 mm for VX, VX IT, VX SE, TE, TS, TS IT, TP, PC, IW

Heavy-duty base/plinth corner pieces with molded self-positioning to the enclosure, can be used with or without base/plinth trim panel, depending on the application. Large openings in the base/plinth corner piece for optimal access to the screwing point, can be covered using plastic bay and corner covers.

## Features

Model No.	VX 8640.001
Product description	Heavy-duty base/plinth corner pieces with molded self-positioning to the enclosure, can be used with or without trim panels depending on the application. Large openings in the base/plinth corner piece for optimal access to the screw-fastening point, can be concealed with a plastic corner and baying cover.
Material	Base/plinth corner piece: Carbon steel Base/plinth trim panels, front/rear: Carbon steel Corner and baying covers: Plastic
Color	RAL 9005
Supply includes	4 x base/plinth corner pieces, 100 mm high 4 x corner covers 1 x baying cover 2 x base/plinth trim panels, front/rear, 100 mm high Assembly components
Note	Base/plinth trim panels, on the side for closing off a base/plinth unit, for additional stabilization of the bases/plinths to one another, or for interior installation of the bases/plinths
Dimensions	Height: 100 mm Height: 3.94 "

# Features

---

Suitable for	Enclosure type: VX VX IT VX SE TS IT TX CableNet Width: = 400 mm Enclosure type: VX VX IT VX SE TS IT TX CableNet Width: = 15.7 "
Type rating according to UL 50E	Type 1 Type 12
Weight/packaging unit	3.67 kg 8.1 lb.
Packaging unit	2 pc(s).
Net weight	3.6 kg
Customs tariff number	94039910
ETIM 9	EC000721
ETIM 8	EC000721
ECLASS 8.0	27182003
Product description	VX Base/plinth corner piece, with base/plinth trim panel, front and rear, H: 100 mm, for W: 400 mm, sheet steel

---

# Approvals

---

Approvals	UL + C-UL - FTTA
-----------	------------------