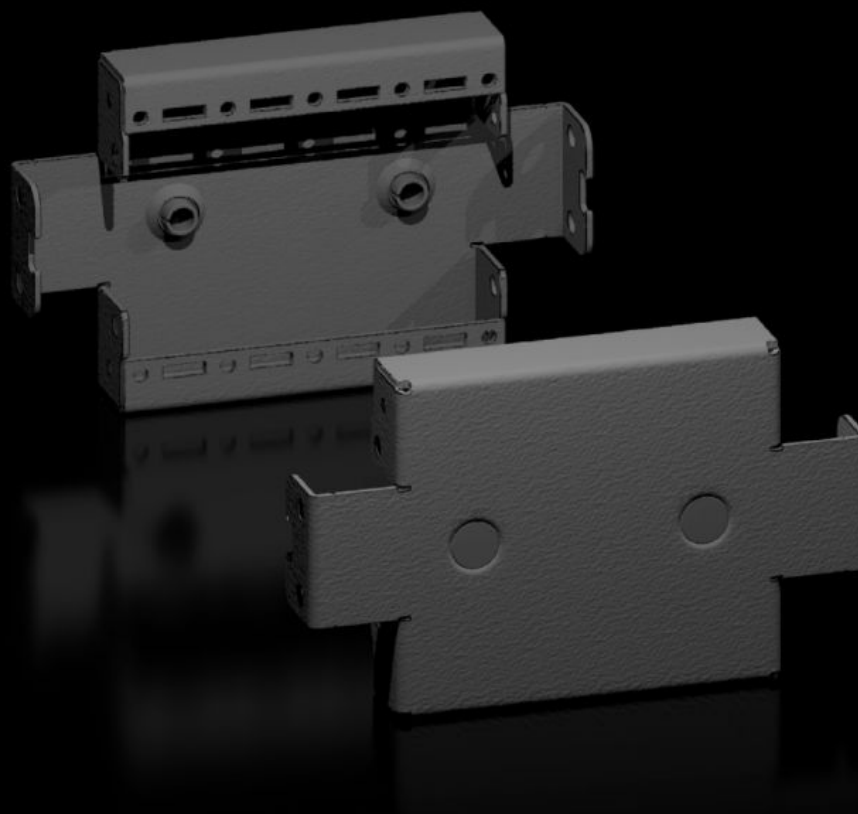


Rittal – The System.

Faster – better – everywhere.



VX 8640.030

Base/plinth trim panels, side, 100 mm

State: 8/26/2025 (Source: [rittal.com/us-en](https://www.rittal.com/us-en))

ENCLOSURES

POWER DISTRIBUTION

CLIMATE CONTROL

IT INFRASTRUCTURE

SOFTWARE & SERVICES

FRIEDHELM LOH GROUP



VX 8640.030 - Base/plinth trim panels, side, 100 mm for base/plinth system VX, carbon steel

For side blanking of a base/plinth unit and additional stability, or the interior installation of bayed base/plinths. One 200 mm high or two 100 mm high trim panels can optionally be fitted on 200 mm high base/plinths.

Features

Model No.	VX 8640.030
Product description	For side blanking of a base/plinth unit and additional stability, or the interior installation of bayed base/plinths. One 200 mm high or two 100 mm high trim panels can optionally be fitted on 200 mm high base/plinths.
Material	Carbon steel
Color	RAL 9005
Supply includes	Assembly components
Dimensions	Height: 100 mm Height: 3.94 "
Suitable for	Depth: = 300 mm Depth: = 11.8 "
Type rating according to UL 50E	Type 1, 12
Weight/package unit	0.614 kg 1.4 lb.
Packaging unit	2 pc(s).
Net weight	0.6
Gross weight	0.614
Customs tariff number	94039910
EAN	4028177958920
E-Number Sweden	E3465376
ETIM 9	EC000721

Features

ECLASS 8.0

27182003

Approvals

Approvals

UL + C-UL - FTTA