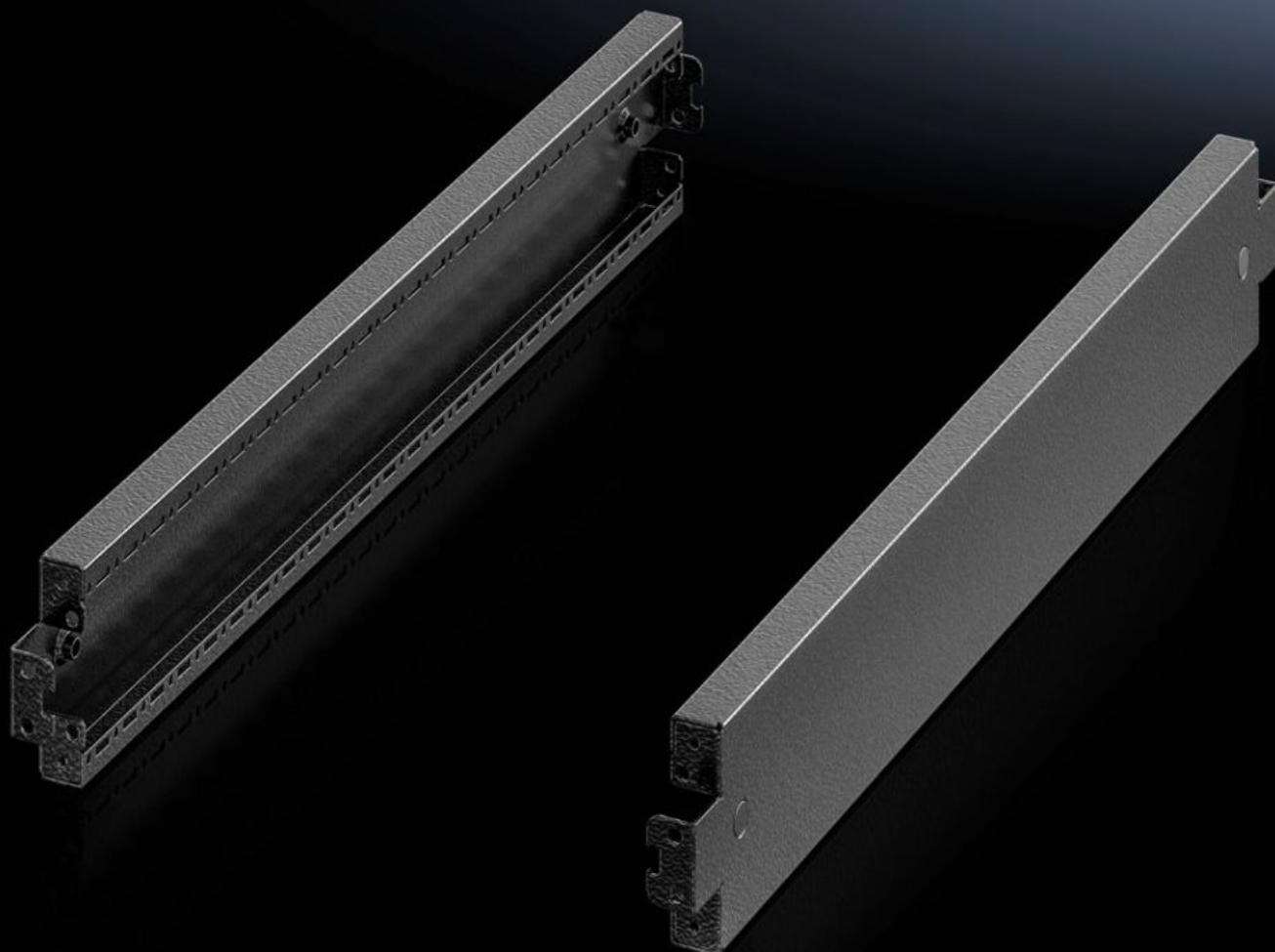


Rittal – The System.

Faster – better – everywhere.



VX 8640.032

Base/plinth trim panels, side, 100 mm

State: 8/22/2025 (Source: rittal.com/us-en)

ENCLOSURES

POWER DISTRIBUTION

CLIMATE CONTROL

IT INFRASTRUCTURE

SOFTWARE & SERVICES

FRIEDHELM LOH GROUP



VX 8640.032 - Base/plinth trim panels, side, 100 mm for base/plinth system VX, carbon steel

For side blanking of a base/plinth unit and additional stability, or the interior installation of bayed base/plinths. One 200 mm high or two 100 mm high trim panels can optionally be fitted on 200 mm high base/plinths.

Features

Model No.	VX 8640.032
Product description	For side blanking of a base/plinth unit and additional stability, or the interior installation of bayed base/plinths. One 200 mm high or two 100 mm high trim panels can optionally be fitted on 200 mm high base/plinths.
Material	Carbon steel
Color	RAL 9005
Supply includes	Assembly components
Dimensions	Height: 100 mm Height: 3.94 "
Suitable for	Depth: = 500 mm Depth: = 19.7 "
Type rating according to UL 50E	Type 1, 12
Weight/package unit	1.36 kg 3 lb.
Packaging unit	2 pc(s).
Net weight	1.16
Gross weight	1.36
Customs tariff number	94039910
EAN	4028177958944
E-Number Sweden	E3465378
ETIM 9	EC000721

Features

ECLASS 8.0

27182003

Approvals

Approvals

UL + C-UL - FTTA