

Rittal – The System.

Faster – better – everywhere.



VX 8660.031

Base/Plinth Trim Panels, Side

State: 2/18/2026 (Source: [rittal.com/us-en](https://www.rittal.com/us-en))

ENCLOSURES

POWER DISTRIBUTION

CLIMATE CONTROL

IT INFRASTRUCTURE

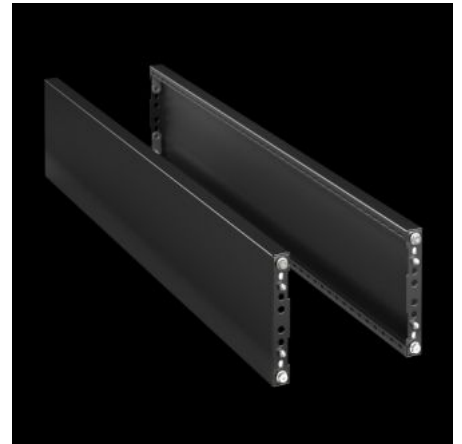
SOFTWARE & SERVICES

FRIEDHELM LOH GROUP



VX 8660.031 - Base/Plinth Trim Panels, Side for base/plinth system VX, carbon steel

For side blanking of a base/plinth unit and for additional stabilization or the interior installation of baying bases. One 200 mm-high or two 100 mm-high trim panels can optionally be fitted on 200 mm-high base/plinths.



Features

Model No.	VX 8660.031
Version	Closed
Material	Carbon steel
Color	RAL 9005
Supply includes	Assembly components
Dimensions	Height: 100 mm Height: 3.94 "

Features

Suitable for	Enclosure type: VX VX IT VX SE TX CableNet TS TS IT TP PC IW CX Depth: = 400 mm Enclosure type: VX VX IT VX SE TX CableNet TS TS IT TP PC IW CX Depth: = 15.7 "
Type rating according to UL 50E	Type 1 Type 12
Weight/packaging unit	1.11 kg 2.4 lb.
Packaging unit	2 pc(s).
Suitable for	for base/plinth system VX, carbon steel
Net weight	1 kg
Gross weight	1.152 kg
PCF/VE (cradle-to-gate)	4.2 kg CO2 eq (Cat B)
Information regarding the PCF class	Category B: PCF value (cradle-to-gate) calculated approximately on the basis of the product weight and self-declared
Customs tariff number	94039910
ETIM 9	EC000721

Features

ETIM 8	EC000721
ECLASS 8.0	27182003
Product description	VX Base/plinth trim panels, H: 100 mm, side, for D: 400 mm, carbon steel

Approvals

Explanations	PCF-declaration
--------------	-----------------