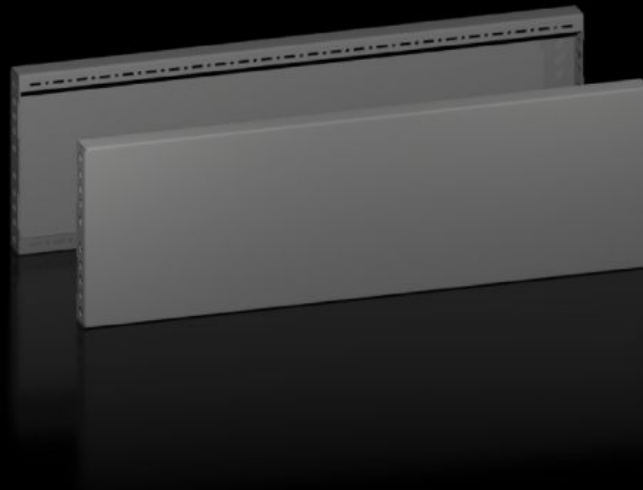


Rittal – The System.

Faster – better – everywhere.



VX 8660.044

Base/Plinth Trim Panels, Side

State: 4/29/2026 (Source: rittal.com/us-en)

ENCLOSURES

POWER DISTRIBUTION

CLIMATE CONTROL

IT INFRASTRUCTURE

SOFTWARE & SERVICES

FRIEDHELM LOH GROUP



VX 8660.044 - Base/Plinth Trim Panels, Side for base/ plinth system VX, carbon steel

For side blanking of a base/plinth unit and for additional stabilization or the interior installation of baying bases. One 200 mm-high or two 100 mm-high trim panels can optionally be fitted on 200 mm-high base/plinths.



Features

Model No.	VX 8660.044
Version	Closed
Material	Carbon steel
Color	RAL 9005
Supply includes	Assembly components
Dimensions	Height: 200 mm Height: 7.87 "

Features

Suitable for	Enclosure type: VX VX IT VX SE TX CableNet TS TS IT TP PC IW CX Depth: = 800 mm Enclosure type: VX VX IT VX SE TX CableNet TS TS IT TP PC IW CX Depth: = 31.5 "
Type rating according to UL 50E	Type 1 Type 12
Weight/packaging unit	4.44 kg 9.8 lb.
Packaging unit	2 pc(s).
Suitable for	for base/plinth system VX, carbon steel
Net weight	4.42 kg
Gross weight	4.444 kg
PCF/VE (cradle-to-gate)	16.9 kg CO2 eq (Cat B)
Information regarding the PCF class	Category B: PCF value (cradle-to-gate) calculated approximately on the basis of the product weight and self-declared
Customs tariff number	94039910
ETIM 9	EC000721

Features

ETIM 8	EC000721
ECLASS 8.0	27182003
Product description	VX Base/plinth trim panels, H: 200 mm, side, for D: 800 mm, carbon steel

Approvals

Explanations	PCF-declaration
--------------	-----------------