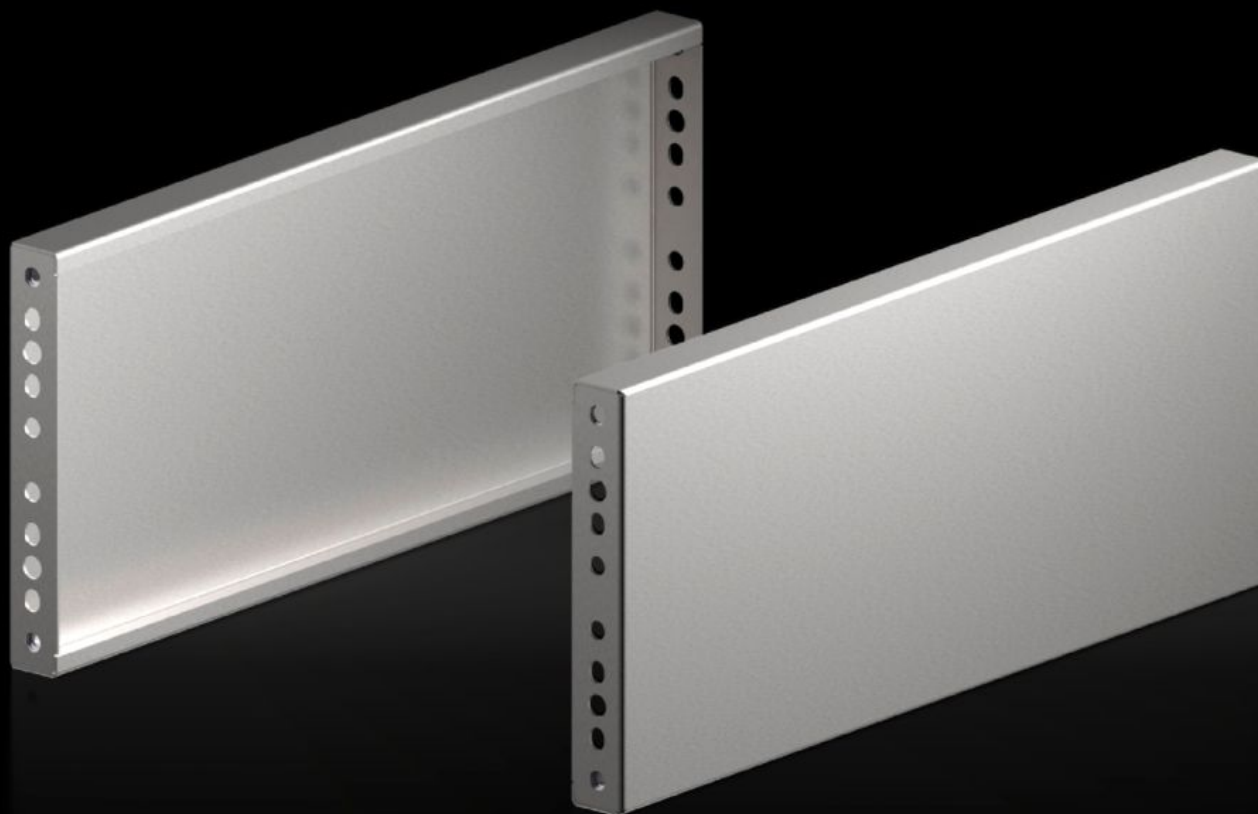


**Rittal – The System.**

Faster – better – everywhere.



**VX 8660.082**

**Base/plinth panels, on side for VX  
base/plinth system, stainless steel**

State: 8/10/2025 (Source: [rittal.com/us-en](https://www.rittal.com/us-en))

ENCLOSURES

POWER DISTRIBUTION

CLIMATE CONTROL

IT INFRASTRUCTURE

SOFTWARE & SERVICES

FRIEDHELM LOH GROUP



# VX 8660.082 - Base/plinth panels, on side for VX base/ plinth system, stainless steel new version/design

Stainless steel base/plinth trim panels are used depth-wise for laterally closing a base/plinth unit.



## Features

Model No.	VX 8660.082
Material	Stainless steel 1.4301 (AISI 304)
Surface finish	Brushed, grain 400
Supply includes	Assembly components
Note	The components of the first generation base/plinth system cannot be combined with the components of the second generation base/plinth system
Dimensions	Height: 200 mm Height: 7.87 "
Suitable for	Enclosure type: VX VX SE TS PC Depth: = 600 mm Enclosure type: VX VX SE TS PC Depth: = 23.6 "

# Features

Type rating according to UL 50E	Type 1 Type 3R Type 4 Type 4X Type 12
Packaging unit	2 pc(s).
Net weight	3.08
Gross weight	3.386
Customs tariff number	94039910
EAN	4028177037762
ETIM 9	EC000721
ETIM 8	EC000721
ECLASS 8.0	27182003

# Approvals

Approvals	UL + C-UL - FTTA
-----------	------------------