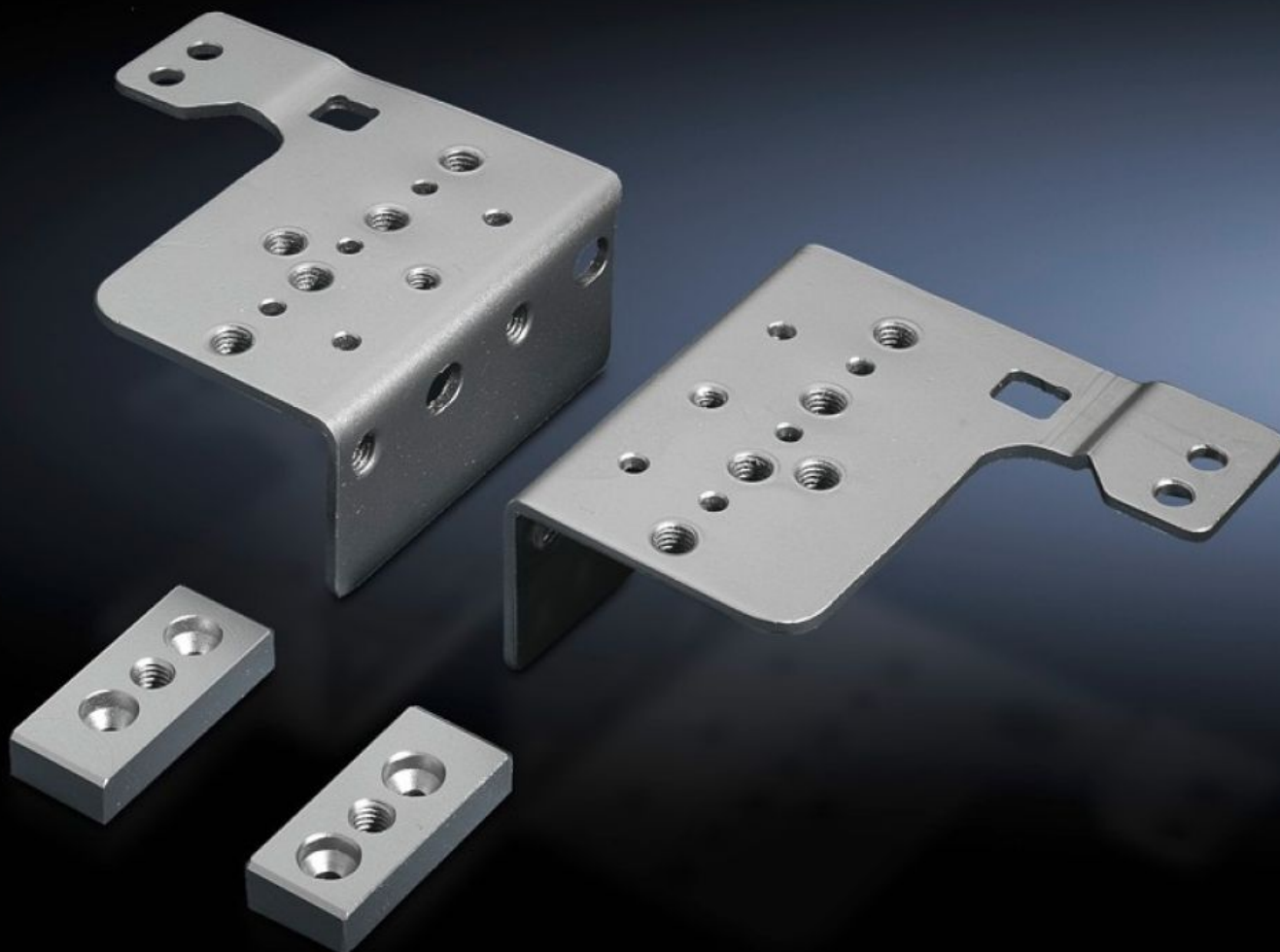


Rittal – The System.

Faster – better – everywhere.



TS 8800.200 Width divider

State: 8/30/2025 (Source: rittal.com/us-en)

ENCLOSURES

POWER DISTRIBUTION

CLIMATE CONTROL

IT INFRASTRUCTURE

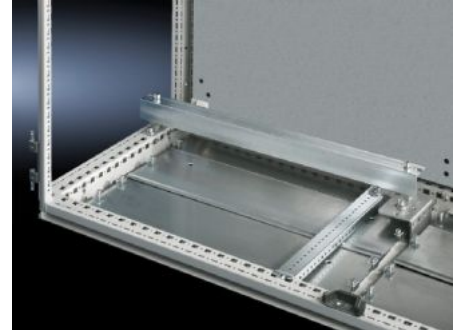
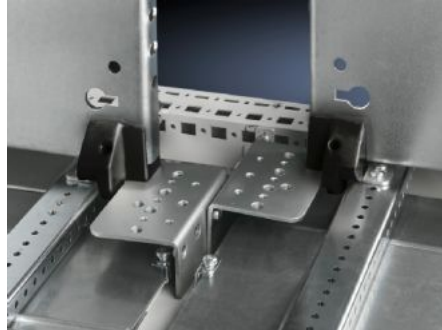
SOFTWARE & SERVICES

FRIEDHELM LOH GROUP



TS 8800.200 - Width divider

Width divider, divides 1200 mm wide TS and SE enclosures into two halves in the base assembly, to enable different configurations.



Features

Model No.	TS 8800.200
Product description	Divides 1200 mm wide TS or SE enclosures into two halves.
Material	Carbon steel
Surface finish	Zinc-plated
Supply includes	1 bracket for right 1 bracket for left 2 compensating plates for the top Assembly components

Features

Installation options	<p>Two mounting plates side by side: Two mounting plates (from 600 mm wide enclosures) in a 1200 mm wide enclosure allow independent positioning and easy handling. For this installation, 4 punched rails, 18 x 38 mm, at the bottom, to fit enclosure depth and 1 PS punched section without mounting flange, 23 x 73 mm, at the top, to fit enclosure depth, are required</p> <p>System support rails, fitted on the left: While heavy installed equipment rests on the system support rails, the remaining floor space is free, e.g., for unhindered cable entry. For this installation, 2 system support rails and 1 TS punched rail 18 x 38 mm, to fit enclosure depth, are required</p> <p>Cable clamp rail, installed on the left: With 1200 mm wide enclosures, the width divider allows cable entry and cable clamping to be arranged differently on the left and right of the enclosure. For this installation, 1 cable clamp rail and 1 TS punched rail 18 x 38 mm, to fit enclosure depth, are required</p>
Mounting tip	The additional accessories that will be required depends on the installation scenario in question
Packaging unit	1 pc(s).
Net weight	0.64
Gross weight	0.779
Customs tariff number	73269098
EAN	4028177212565
ETIM 9	EC002620
ECLASS 8.0	27189261