

# Rittal – The System.

Faster – better – everywhere.



## TS 8800.320

### Adapter rail

State: 7/22/2025 (Source: [rittal.com/us-en](https://www.rittal.com/us-en))

ENCLOSURES

POWER DISTRIBUTION

CLIMATE CONTROL

IT INFRASTRUCTURE

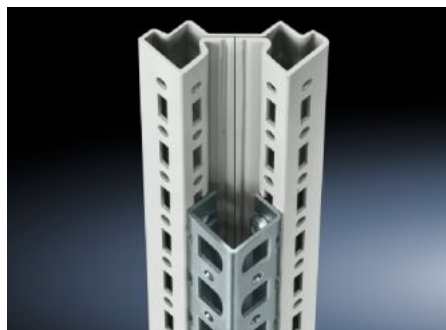
SOFTWARE & SERVICES

FRIEDHELM LOH GROUP



# TS 8800.320 - Adapter rail for PS compatibility

Installation in the vertical TS enclosure profiles to create compatibility with: PS hole profile, PS mounting chassis, PS system chassis.



## Features

Model No.	TS 8800.320
Product description	To create compatibility with: PS punched rail 23 x 23 mm, PS mounting chassis 23 x 73 mm and PS system chassis 23 x 73 mm.
Material	Carbon steel
Surface finish	Zinc-plated
Supply includes	Assembly screws
Installation options	On the vertical TS, VX SE enclosure section On the horizontal VX SE enclosure section, top, in the width
Suitable for	Enclosure type: TS Height: = 2,200 mm Enclosure type: TS Height: = 86.6 "
Packaging unit	4 pc(s).
Net weight	4.456
Gross weight	4.657
Customs tariff number	73269098
EAN	4028177212664
ETIM 9	EC002625

# Features

ECLASS 8.0

27189234