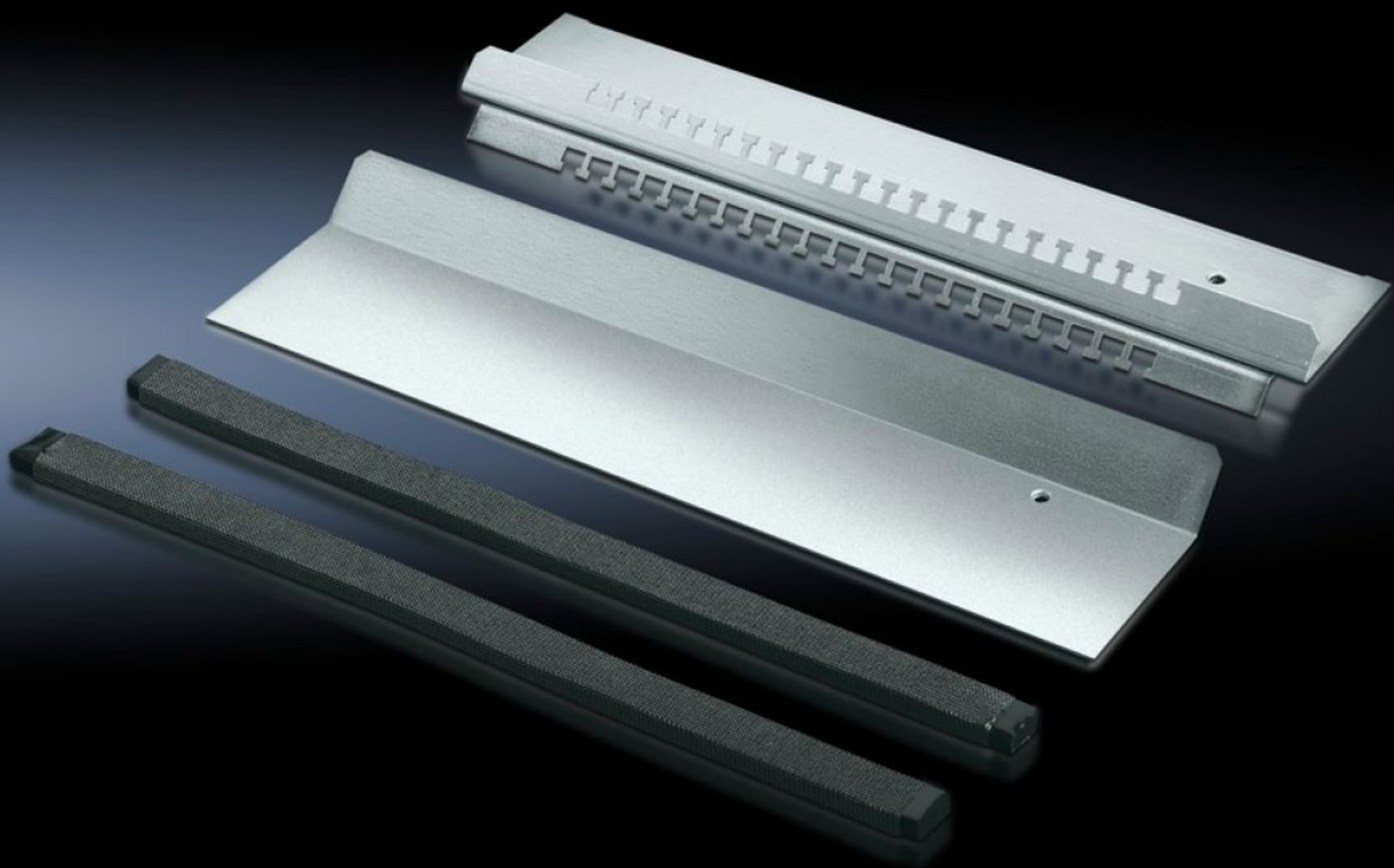


# Rittal – The System.

Faster – better – everywhere.



## TS 8800.600 EMC Base Plate

State: 9/6/2025 (Source: [rittal.com/us-en](http://rittal.com/us-en))

ENCLOSURES

POWER DISTRIBUTION

CLIMATE CONTROL

IT INFRASTRUCTURE

SOFTWARE & SERVICES

FRIEDHELM LOH GROUP



# TS 8800.600 - EMC Base Plate

For shielded cables with max. 20 mm diameter in combination with standard base plates.

## Features

Model No.	TS 8800.600
Product description	For shielded cables with max. 20 mm diameter. Combined EMC contacting and cable fixation provide low-impedance contact between the cable shield and the base plate. For all 400, 500, 600 and 800 mm deep enclosures, in combination with standard base plates.
Material	Carbon steel
Surface finish	Zinc-plated
Supply includes	Cable management rail with T-head punching 1 sliding base plate 2 EMC seals
Note on Model No.:	For one enclosure half only
Suitable for	Enclosure type: TS Width: = 1,000 mm Enclosure type: TS Width: = 39.4 "
Note	No standard-compliant IP protection rating possible
Packaging unit	1 pc(s).
Net weight	1.438
Gross weight	1.66
Customs tariff number	94039910
EAN	4028177214903
ECLASS 8.0	27189261