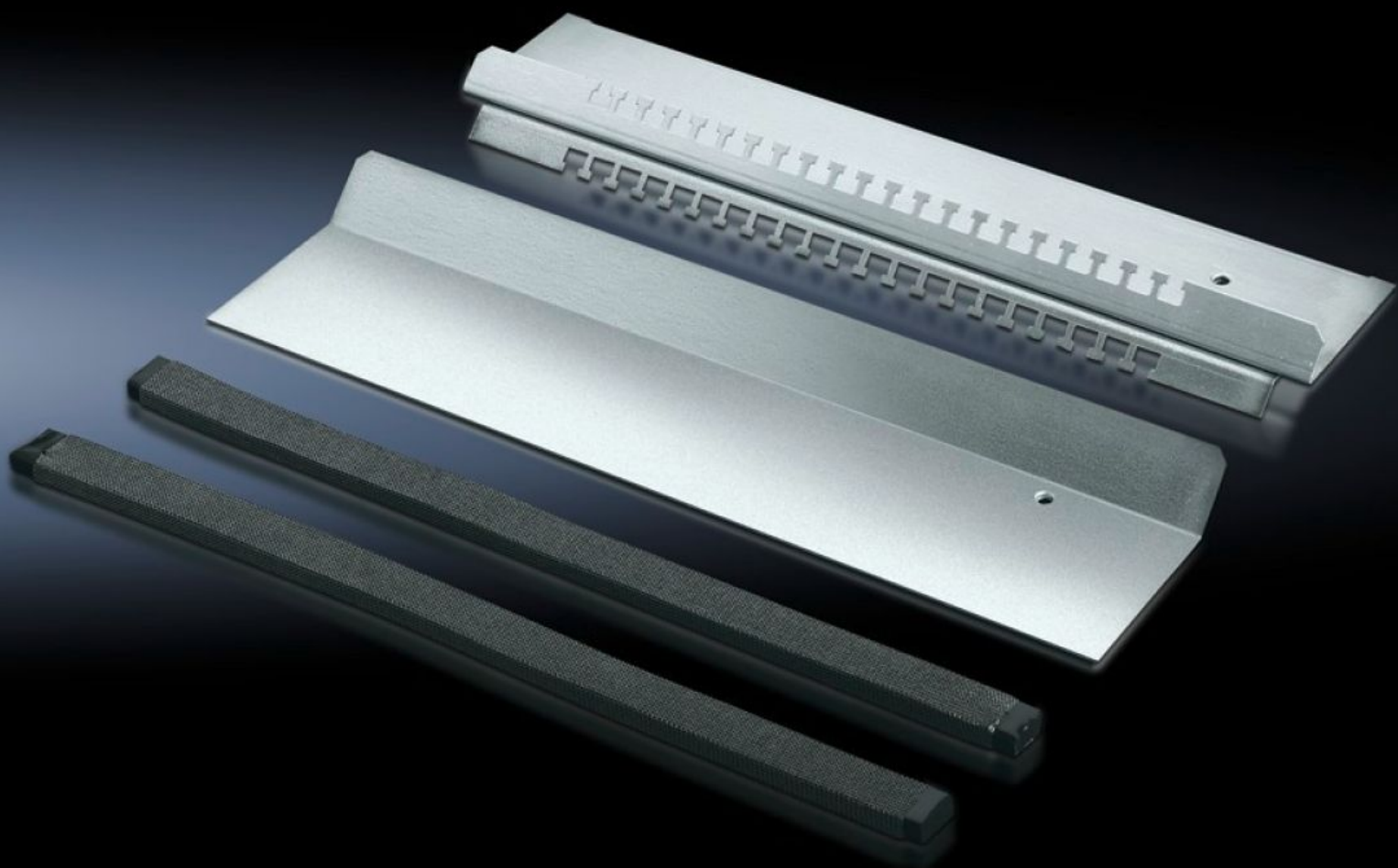


Rittal – The System.

Faster – better – everywhere.



TS 8800.620 EMC Base Plate

State: 6/6/2025 (Source: [rittal.com/us-en](https://www.rittal.com/us-en))

ENCLOSURES

POWER DISTRIBUTION

CLIMATE CONTROL

IT INFRASTRUCTURE

SOFTWARE & SERVICES

FRIEDHELM LOH GROUP



TS 8800.620 - EMC Base Plate

For shielded cables with max. 20 mm diameter in combination with standard base plates.

Features

Model No.	TS 8800.620
Product description	For shielded cables with max. 20 mm diameter. Combined EMC contacting and cable fixation provide low-impedance contact between the cable shield and the base plate. For all 400, 500, 600 and 800 mm deep enclosures, in combination with standard base plates.
Material	Carbon steel
Surface finish	Zinc-plated
Supply includes	Cable management rail with T-head punching 1 sliding base plate 2 EMC seals
Note on Model No.:	For one enclosure half only
Suitable for	Enclosure type: TS Width: = 1,200 mm Enclosure type: TS Width: = 47.2 "
Note	No standard-compliant IP protection rating possible
Packaging unit	1 pc(s).
Net weight	1.825
Gross weight	2.025
Customs tariff number	73269098
EAN	4028177214910
ETIM 9	EC002620
ECLASS 8.0	27189261