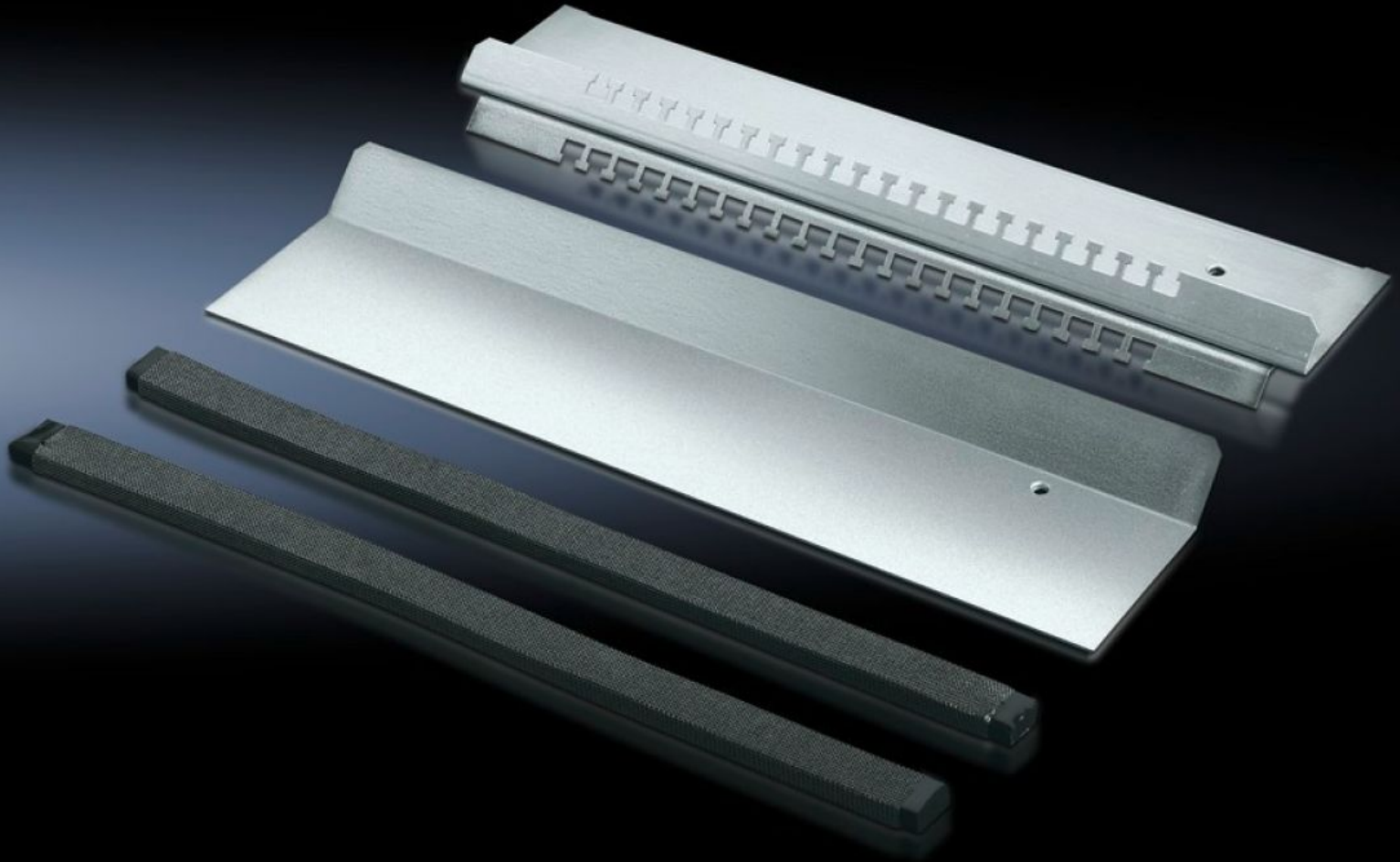


Rittal – The System.

Faster – better – everywhere.



TS 8800.680 EMC Base Plate

State: 6/28/2026 (Source: rittal.com/us-en)

ENCLOSURES

POWER DISTRIBUTION

CLIMATE CONTROL

IT INFRASTRUCTURE

SOFTWARE & SERVICES

FRIEDHELM LOH GROUP



TS 8800.680 - EMC Base Plate

For shielded cables with max. 20 mm diameter in combination with standard base plates.

Features

| | |
|-----------------------|-----------------------------------------------------------------------------------------------------------------------------------------------------------------------------------------------------------------------------------------------------------------|
| Model No. | TS 8800.680 |
| Product description | For shielded cables with max. 20 mm diameter. Combined EMC contacting and cable fixation provide low-impedance contact between the cable shield and the base plate. For all 400, 500, 600 and 800 mm deep enclosures, in combination with standard base plates. |
| Material | Carbon steel |
| Surface finish | Zinc-plated |
| Supply includes | Cable management rail with T-head punching 1 sliding base plate 2 EMC seals |
| Suitable for | Enclosure type: TS Width: = 800 mm Enclosure type: TS Width: = 31.5 " |
| Note | No standard-compliant IP protection rating possible |
| Packaging unit | 1 pc(s). |
| Net weight | 2.4 kg |
| Gross weight | 2.554 kg |
| Customs tariff number | 94039910 |
| ETIM 9 | EC002620 |
| ECLASS 8.0 | 27189261 |
| Product description | TS EMC gland plate, W: 800 mm |