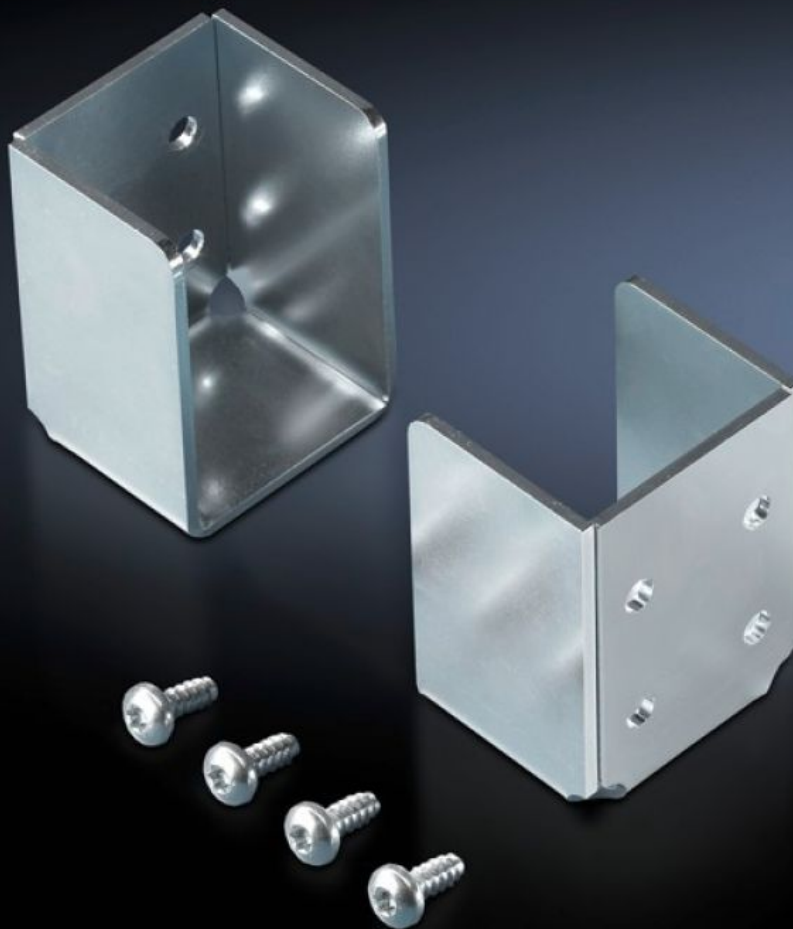


Rittal – The System.

Faster – better – everywhere.



TS 8801.000 Holder

State: 9/8/2025 (Source: [rittal.com/us-en](https://www.rittal.com/us-en))

ENCLOSURES

POWER DISTRIBUTION

CLIMATE CONTROL

IT INFRASTRUCTURE

SOFTWARE & SERVICES

FRIEDHELM LOH GROUP



TS 8801.000 - Holder for protective bars

Mounted on the vertical profile. Simply insert the protective bar.

Features

Model No.	TS 8801.000
Product description	Mounted on the vertical profile. Simply insert the protective bar.
Material	Carbon steel
Surface finish	Zinc-plated
Supply includes	Assembly components
Packaging unit	2 pc(s).
Net weight	0.35
Gross weight	0.368
PCF/VE (cradle-to-gate)	1.7 kg CO2 eq (Cat B)
Information regarding the PCF class	Category B: PCF value (cradle-to-gate) calculated approximately on the basis of the product weight and self-declared
Customs tariff number	83024900
EAN	4028177516977
ETIM 9	EC002620
ECLASS 8.0	27189261