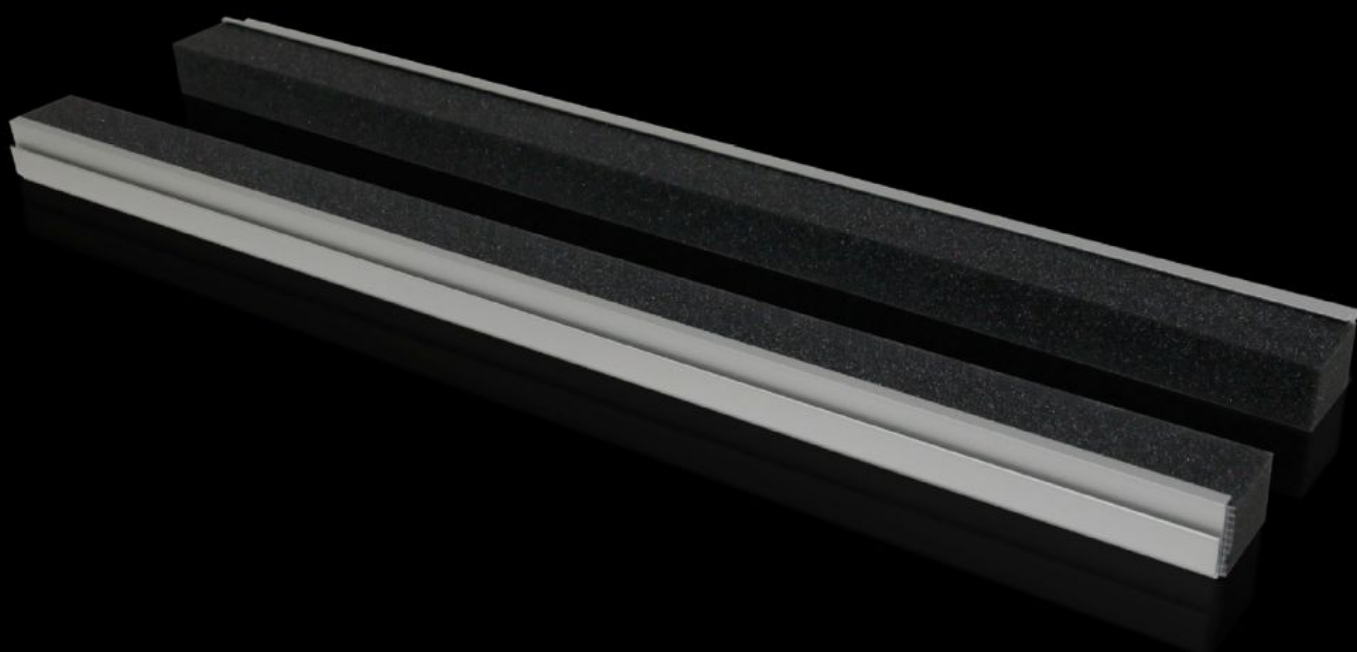
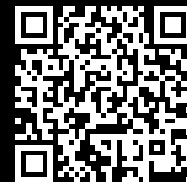


Rittal – The System.

Faster – better – everywhere.



TS 8802.125

Section for cable entry, rear

State: 2/4/2026 (Source: rittal.com/us-en)

ENCLOSURES

POWER DISTRIBUTION

CLIMATE CONTROL

IT INFRASTRUCTURE

SOFTWARE & SERVICES

FRIEDHELM LOH GROUP



TS 8802.125 - Section for cable entry, rear for TS, TP

Inserted in base opening.

Features

Model No.	TS 8802.125
Product description	To seal the cable entry on the base opening.
Benefits	Particularly well-suited to cables with identical cross-sections When installing the mounting plate in the rearmost position, the cables may be routed directly without large bending radii.
Technical specifications	Foam rubber cable clamping profile: Cross-section: 30 x 25 mm
Applications	Mount directly on the base opening/base tray and base plate
Material	Extruded aluminum section Foam rubber cable clamping profile: PU foam
Supply includes	Plug-in sections, incl. foam rubber clamp strip
Note	2 pc(s). are sufficient for one base opening up to an enclosure width of 800 mm From an enclosure width of 1,000 mm, two base openings are provided. 4 units per enclosure may be fitted
Suitable for	Enclosure type: TS: = 1,200 mm Enclosure type: TP Enclosure type: TS: = 47.2 " Enclosure type: TP
Protection category IP to IEC 60529	IP 55 if correctly installed
Packaging unit	4 pc(s).
Net weight	0.384
Gross weight	0.433
Customs tariff number	76042990
EAN	4028177496385
ETIM 9	EC002624

Features

ECLASS 8.0

27189265