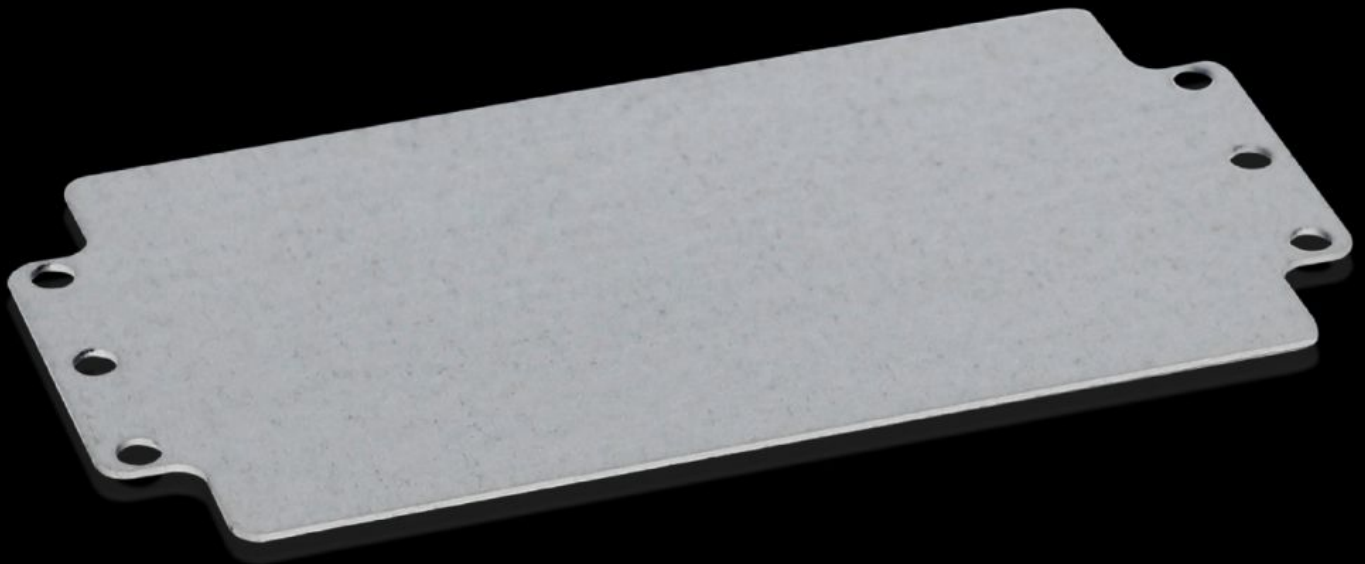


Rittal – The System.

Faster – better – everywhere.



GA 9110.700 Mounting panel

State: 4/4/2026 (Source: rittal.com/us-en)

ENCLOSURES

POWER DISTRIBUTION

CLIMATE CONTROL

IT INFRASTRUCTURE

SOFTWARE & SERVICES

FRIEDHELM LOH GROUP



GA 9110.700 - Mounting panel For GA

For individual interior installation, with mounting holes.



Features

Model No.	GA 9110.700
Product description	For individual interior installation, with mounting holes.
Material	Carbon steel
Surface finish	Zinc-plated
Dimensions of mounting plate (W x H)	207 mm x 107 mm 8.15 " x 4.21 "
Suitable for	Enclosure type: GA Width: = 220 mm Height: = 120 mm Enclosure type: GA Width: = 8.66 " Height: = 4.72 "
Packaging unit	2 pc(s).
Net weight	0.45 kg
Gross weight	0.499 kg
PCF/VE (cradle-to-gate)	1.7 kg CO2 eq (Cat B)
Information regarding the PCF class	Category B: PCF value (cradle-to-gate) calculated approximately on the basis of the product weight and self-declared
Customs tariff number	94039910
ETIM 9	EC000213

Features

ECLASS 8.0

27409216

Product description

GA Mounting plate, WH: 207x107 mm