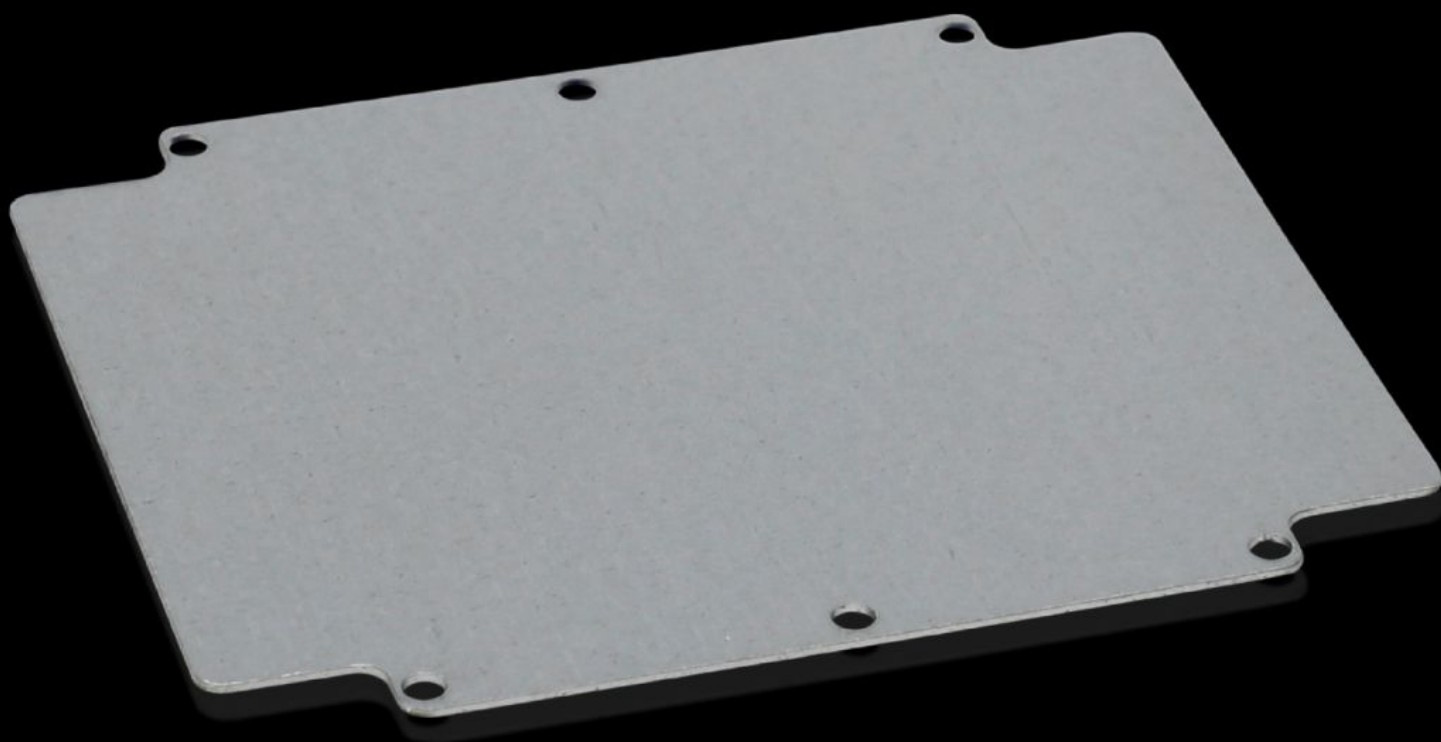


# Rittal – The System.

Faster – better – everywhere.



## GA 9116.700 Mounting panel

State: 8/29/2025 (Source: [rittal.com/us-en](https://www.rittal.com/us-en))

ENCLOSURES

POWER DISTRIBUTION

CLIMATE CONTROL

IT INFRASTRUCTURE

SOFTWARE & SERVICES

FRIEDHELM LOH GROUP



# GA 9116.700 - Mounting panel For GA

For individual interior installation, with mounting holes.



## Features

Model No.	GA 9116.700
Product description	For individual interior installation, with mounting holes.
Material	Carbon steel
Surface finish	Zinc-plated
Dimensions of mounting plate (W x H)	183 mm x 214 mm 7.2 " x 8.43 "
Suitable for	Enclosure type: GA Width: = 202 mm Height: = 232 mm Enclosure type: GA Width: = 7.95 " Height: = 9.13 "
Packaging unit	1 pc(s).
Net weight	0.4
Gross weight	0.442
PCF/VE (cradle-to-gate)	4.5 kg CO2 eq (Cat B)
Information regarding the PCF class	Category B: PCF value (cradle-to-gate) calculated approximately on the basis of the product weight and self-declared
Customs tariff number	94039910
EAN	4028177154360

# Features

ETIM 9	EC000213
ECLASS 8.0	27409216