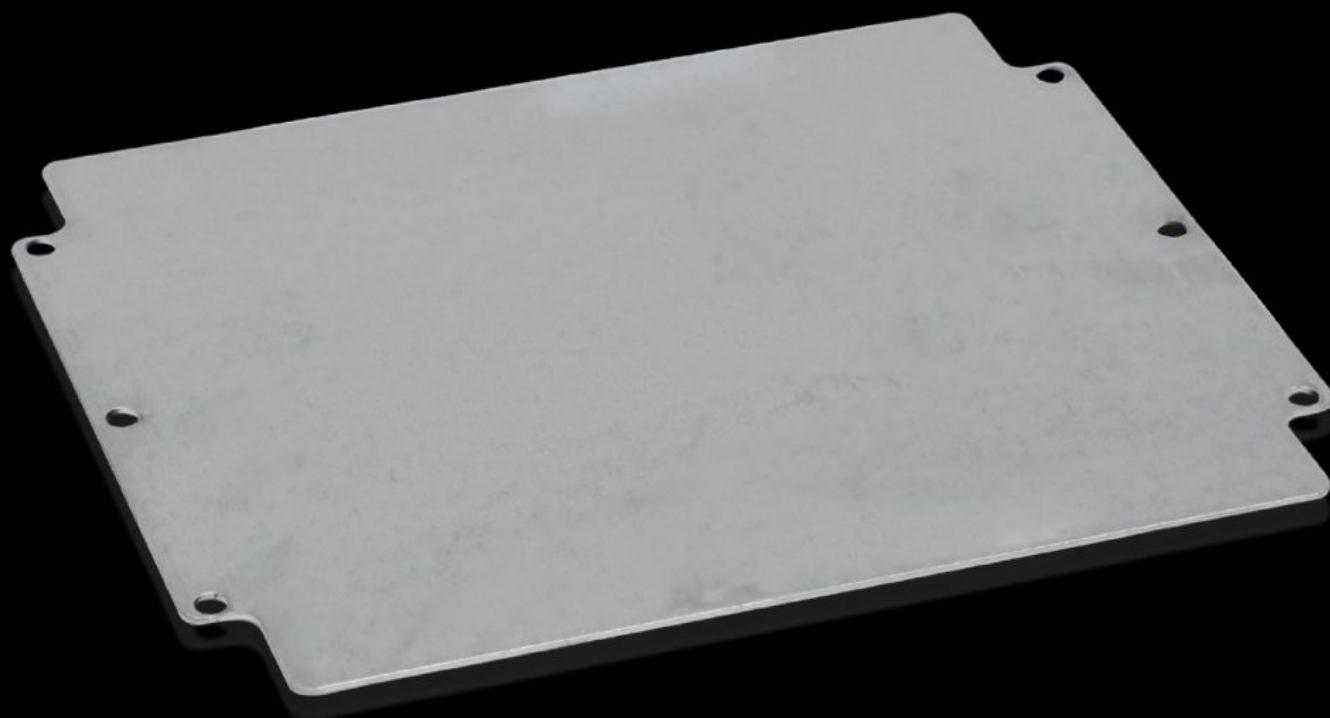


Rittal – The System.

Faster – better – everywhere.



GA 9117.700 Mounting panel

State: 12/18/2025 (Source: rittal.com/us-en)

ENCLOSURES

POWER DISTRIBUTION

CLIMATE CONTROL

IT INFRASTRUCTURE

SOFTWARE & SERVICES

FRIEDHELM LOH GROUP



GA 9117.700 - Mounting panel For GA

For individual interior installation, with mounting holes.



Features

Model No.	GA 9117.700
Product description	For individual interior installation, with mounting holes.
Material	Carbon steel
Surface finish	Zinc-plated
Dimensions of mounting plate (W x H)	264 mm x 214 mm 10.4 " x 8.43 "
Suitable for	Enclosure type: GA Width: = 280 mm Height: = 232 mm Enclosure type: GA Width: = 11 " Height: = 9.13 "
Packaging unit	1 pc(s).
Net weight	0.6
Gross weight	0.663
PCF/VE (cradle-to-gate)	3.4 kg CO2 eq (Cat B)
Information regarding the PCF class	Category B: PCF value (cradle-to-gate) calculated approximately on the basis of the product weight and self-declared
Customs tariff number	94039910
EAN	4028177154377

Features

ETIM 9	EC000213
ECLASS 8.0	27409216