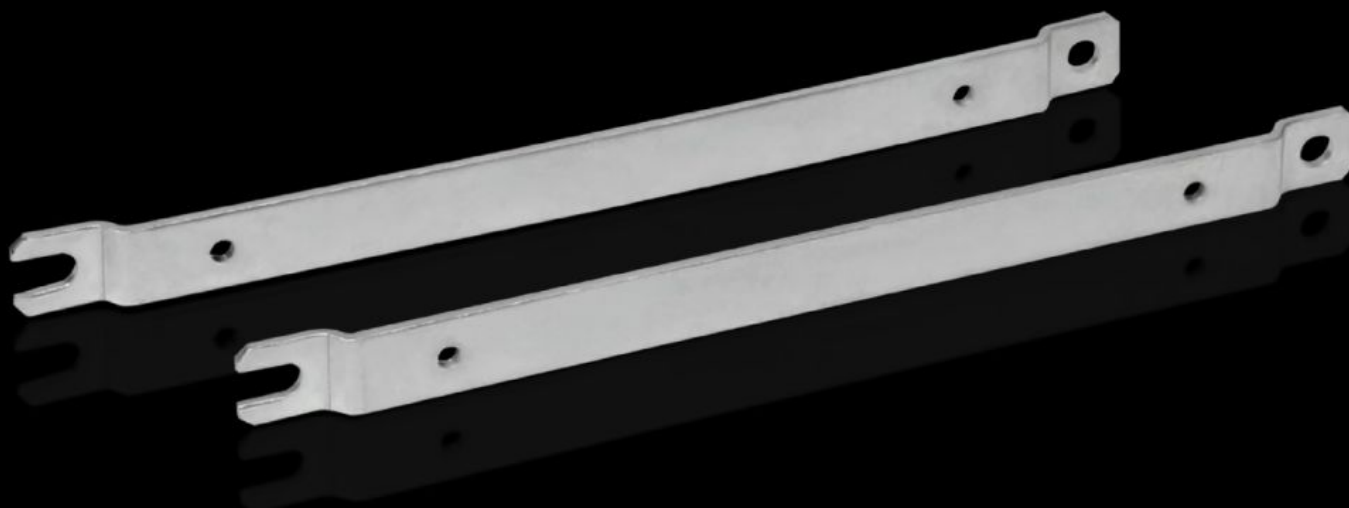


Rittal – The System.

Faster – better – everywhere.



GA 9121.230

Wall mounting bracket

State: 9/11/2025 (Source: [rittal.com/us-en](https://www.rittal.com/us-en))

ENCLOSURES

POWER DISTRIBUTION

CLIMATE CONTROL

IT INFRASTRUCTURE

SOFTWARE & SERVICES

FRIEDHELM LOH GROUP



GA 9121.230 - Wall mounting bracket For GA

For external mounting on surfaces – no need to disassemble the cover if pre-assembled.



Features

Model No.	GA 9121.230
Product description	For external mounting on surfaces – no need to disassemble the cover if pre-assembled.
Material	Carbon steel
Surface finish	Zinc-plated
Suitable for	Enclosure type: GA Height: ≥ 230 mm Enclosure type: GA Height: ≥ 9.06 "
Packaging unit	2 pc(s).
Net weight	0.26
Gross weight	0.287
PCF/VE (cradle-to-gate)	1.1 kg CO2 eq (Cat B)
Information regarding the PCF class	Category B: PCF value (cradle-to-gate) calculated approximately on the basis of the product weight and self-declared
Customs tariff number	83024900
EAN	4028177154520
ETIM 9	EC002625
ECLASS 8.0	27189234