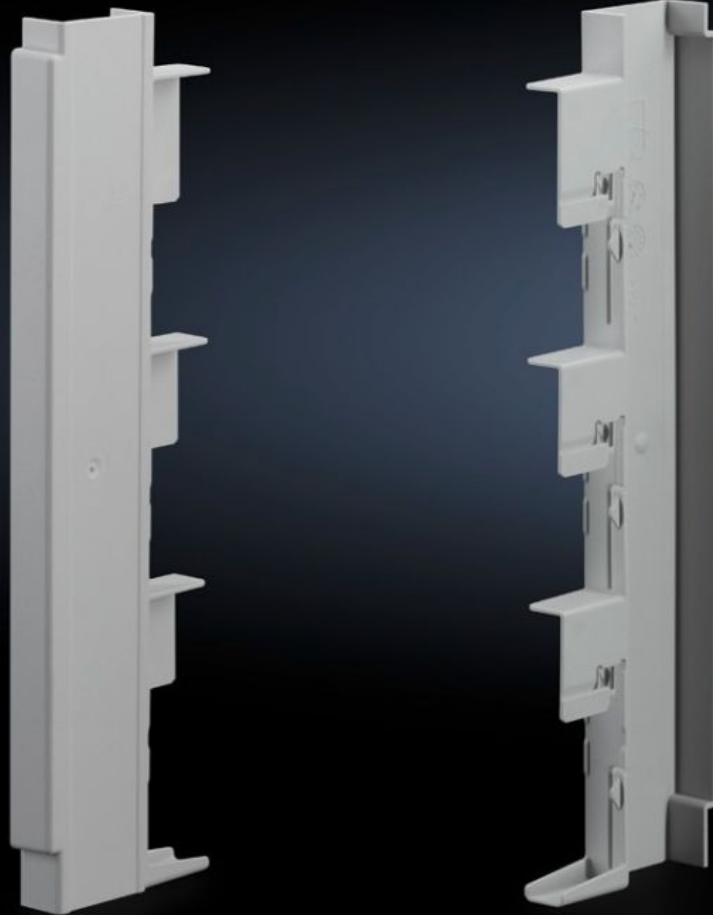


Rittal – The System.

Faster – better – everywhere.



SV 9340.905

Wiring Duct

State: 4/29/2026 (Source: rittal.com/us-en)

ENCLOSURES

POWER DISTRIBUTION

CLIMATE CONTROL

IT INFRASTRUCTURE

SOFTWARE & SERVICES

FRIEDHELM LOH GROUP



SV 9340.905 - Wiring Duct for D-Switch bus-mounting fuse element

For safe and touch-protected routing of connecting cables. In addition, also usable as a spacer.

Features

Model No.	SV 9340.905
Product description	For safe and touch-protected routing of connecting cables. In addition, also usable as a spacer.
Material	Polyamide Fire protection corresponding to UL 94-V0
Color	RAL 7035
Suitable for Model No.	9340.950
Dimensions	Width: 13.5 mm Width: 0.53 "
Packaging unit	10 pc(s).
Net weight	0.3 kg
Customs tariff number	39259020
ETIM 9	EC000775
ECLASS 8.0	27142414
Product description	SV wiring duct for D-Switch bus-mounting fuse base (SV 9340950)