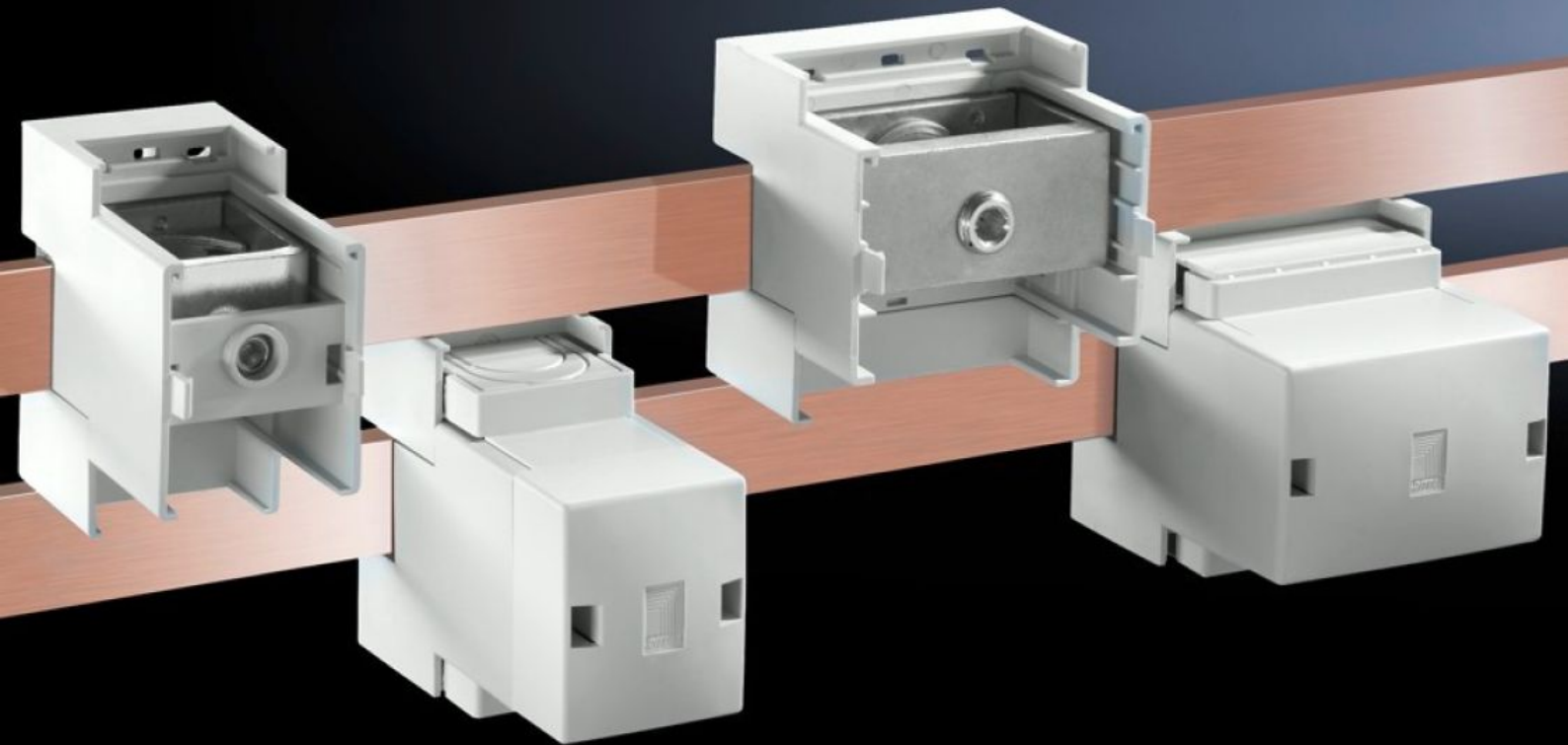


Rittal – The System.

Faster – better – everywhere.



SV 9342.311 Connection block

State: 6/24/2026 (Source: rittal.com/us-en)

ENCLOSURES

POWER DISTRIBUTION

CLIMATE CONTROL

IT INFRASTRUCTURE

SOFTWARE & SERVICES

FRIEDHELM LOH GROUP



SV 9342.311 - Connection block

For connecting round conductors and laminated copper bars.

Features

Model No.	SV 9342.311
Product description	Suitable for 12 x 5 to 30 x 10 mm and PLS 800/1600 busbars.
Material	Punched section: Polyamide Cover: ABS Fire protection corresponding to UL 94-V0
Color	RAL 7035
Supply includes	3 terminals including cover
Clamping area for laminated copper bars for 5 mm bar thickness, (W x H)	33 x 26 mm 1.3 x 1.02 "
Clamping area for laminated copper bars for 10 mm bar thickness, (W x H)	33 x 22 mm 1.3 x 0.87 "
Cable outlet	Top/bottom
Rated current max.	800 A
Electrical UL ratings (SCCR)	65 kA - 480 V, circuit breaker max. 600 A, DIVQ/7 65 kA - 600 V, fuse class L max. 800 A, JDDZ/7
Note	With an overvoltage category III, a rated operational voltage of 1000 V (AC) is achieved. When using the terminal on 2-pole busbar systems (SV 9340.040), the terminal must be rotated through 180° for connection to the PE busbar.
Dimensions	Width: 50 mm Height: 88 mm Width: 1.97 " Height: 3.46 "
Connection of round conductors, fine wire with wire end ferrule	95 - 185 mm ²

Features

Connection of round conductors, multi-wire	95 - 300 mm ²
Packaging unit	3 pc(s).
Net weight	1.227 kg
Gross weight	1.431 kg
Copper weight (kg per piece)	0.096
Customs tariff number	85369095
ETIM 9	EC002270
ECLASS 8.0	27400613
Product description	SV Connection block, 800 A, 690 V, 1-pole, cable outlet top/bottom, round conductor connection 90-300 mm ² , clamping area WH: 33x21/26 mm

Approvals

Approvals	ABS DNV Lloyds Register UL + C-UL (listed)
Explanations	Declaration of conformity Declaration of conformity UK