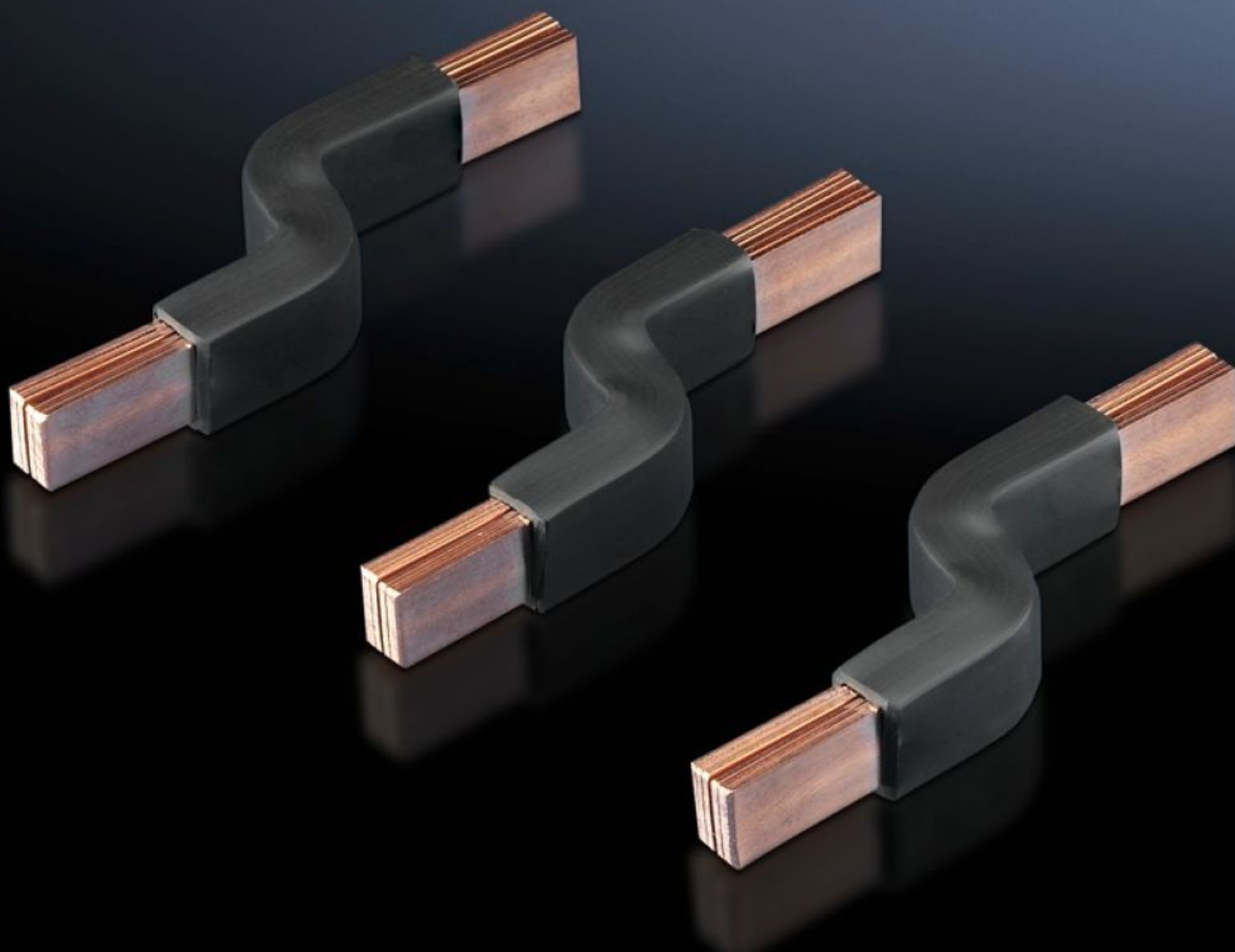


Rittal – The System.

Faster – better – everywhere.



SV 9342.570 Connection Brackets

State: 7/19/2025 (Source: rittal.com/us-en)

ENCLOSURES

POWER DISTRIBUTION

CLIMATE CONTROL

IT INFRASTRUCTURE

SOFTWARE & SERVICES

FRIEDHELM LOH GROUP



SV 9342.570 - Connection Brackets for circuit-breaker component adapters

Pre-assembled, laminated flat copper for connecting standard, commercially available circuit-breakers.



Features

| | |
|-------------------------------|---|
| Model No. | SV 9342.570 |
| Product description | Pre-assembled, laminated flat copper for connecting standard, commercially available molded case circuit-breakers (MCCB). |
| Material | Electrolytic copper |
| Note | Universal application for switchgear with a dimensional difference between the mounting level and the upper edge of the contact level of 20 ± 5 mm. |
| Suitable for Model No. | 9342.500 9342.510 9342.540 9342.550 |
| Laminated flat copper version | Number of lamina: 6 Lamina width: 9 mm Lamina thickness: 0.8 mm Lamina width: 0.35 " Lamina thickness: 0.03 " |
| To fit manufacturer (model) | ABB (T1, T1 UL, T2, T2 UL) Eaton (NZM1, NZM1 UL, BZM B1) Schneider Electric (NSC100, NSE75, NSE100) |
| Packaging unit | 3 pc(s). |

Features

| | |
|------------------------------|---------------|
| Net weight | 0.096 |
| Gross weight | 0.103 |
| Copper weight (kg per piece) | 0.032 |
| Customs tariff number | 73182900 |
| EAN | 4028177551947 |
| ETIM 9 | EC002270 |
| ECLASS 8.0 | 27409221 |

Approvals

| | |
|--------------|---|
| Explanations | Declaration of conformity Declaration of conformity UK |
|--------------|---|