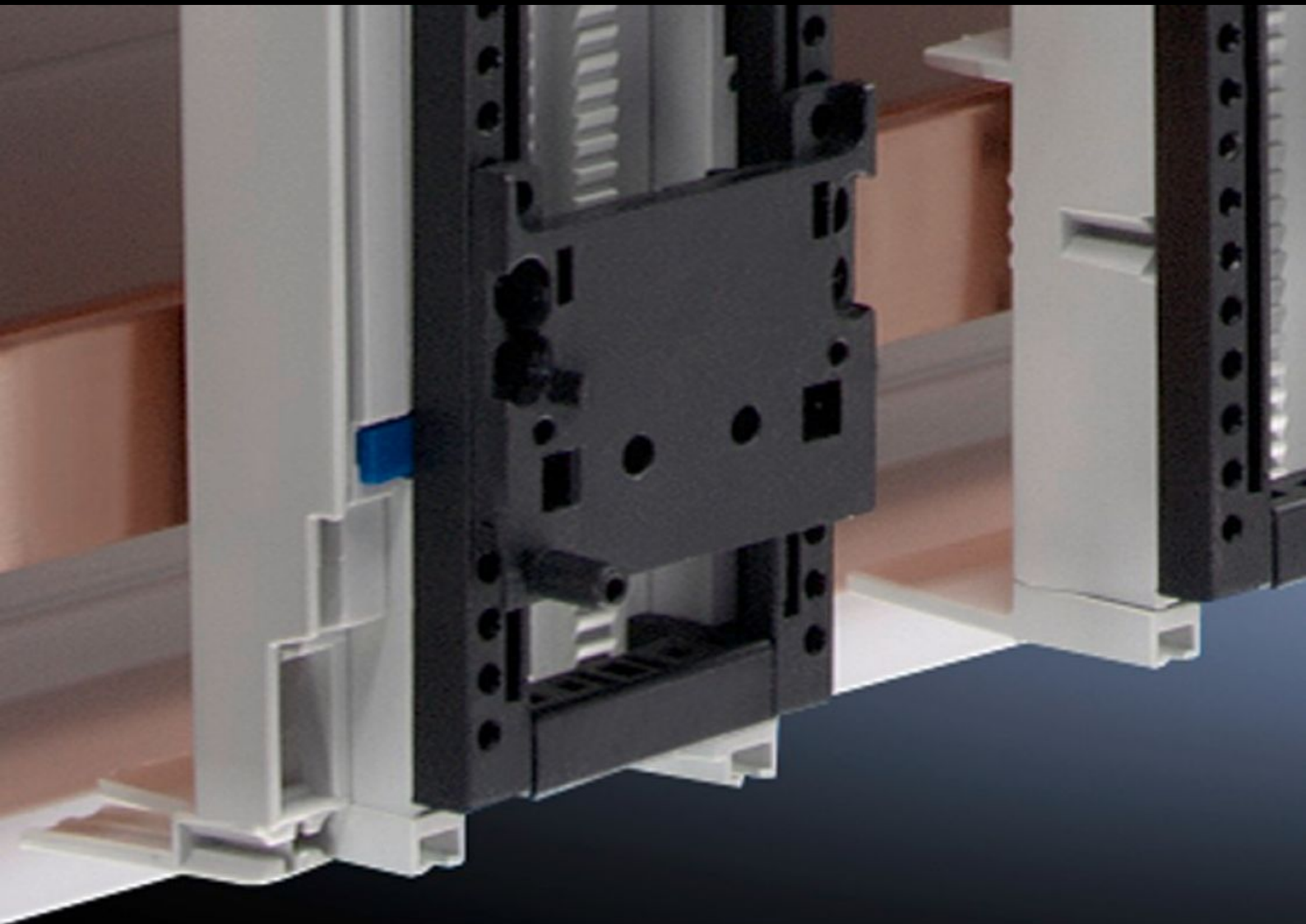


# Rittal – The System.

Faster – better – everywhere.



## SV 9342.800 Pin Block

State: 12/18/2025 (Source: [rittal.com/us-en](http://rittal.com/us-en))

ENCLOSURES

POWER DISTRIBUTION

CLIMATE CONTROL

IT INFRASTRUCTURE

SOFTWARE & SERVICES

FRIEDHELM LOH GROUP



# SV 9342.800 - Pin Block for support frames

For secure attachment and positioning of the contactor on motor starter combinations.



## Features

Model No.	SV 9342.800
Product description	For secure attachment and positioning of the contactor on motor starter combinations, for simple clip-on mounting onto the support frame. Individual vertical positioning is achieved by relocating the PinBlock.
Material	Polyamide
Color	RAL 9005
Support frame width	45 mm 1.77 "
Note	UL approval in conjunction with OM adapter/support
Packaging unit	5 pc(s).
Net weight	0.04
Gross weight	0.036
Customs tariff number	39269097
EAN	4028177503847
ETIM 9	EC002270
ECLASS 8.0	27400613