

Rittal – The System.

Faster – better – everywhere.



RX 9360.103 RiLineX baying set

State: 4/18/2026 (Source: rittal.com/us-en)

ENCLOSURES

POWER DISTRIBUTION

CLIMATE CONTROL

IT INFRASTRUCTURE

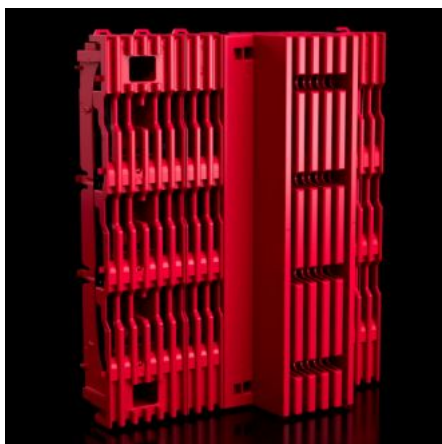
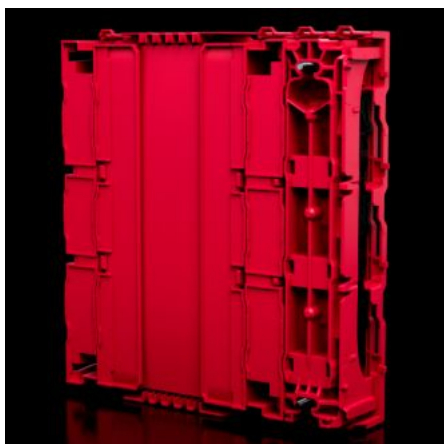
SOFTWARE & SERVICES

FRIEDHELM LOH GROUP



RX 9360.103 - RiLineX baying set for basic module

Baying set, short, without rail connector



Features

Model No.	RX 9360.103
Benefits	Scalable system lengths with basic modules Easy mounting Scalable rated currents due to variable busbar cross-sections Tested short circuit resistance up to max. 65 kA Suitable for applications in the alternating current range up to 1,000 V AC and direct current up to 1,500 V DC
Material	Polyamide (PA 6) Fire behavior corresponding to UL 94
Color	RAL 35745
Supply includes	Board end element left and right Board module cover Board module base plate Assembly components
Number of poles	3-pole
Suitable for Model No.	9365.003 9360.110 9360.120 9360.150

Features

Dimensions	Height: 240 mm Depth: 77 mm Height: 9.45 " Depth: 3.03 "
Protection category IP to IEC 60529	IP 2XB
Packaging unit	2 pc(s).
Net weight	1.5 kg
Gross weight	1.752 kg
Customs tariff number	85369010
ETIM 9	EC002270
Product description	RX buying set for RiLineX basic module, without connector (simple connection)

Approvals

Approvals	UL + C-UL (listed)
Explanations	Declaration of conformity PCF-declaration