

Rittal – The System.

Faster – better – everywhere.



RX 9360.241

RiLineX connection adapter

State: 5/21/2026 (Source: rittal.com/us-en)

ENCLOSURES

POWER DISTRIBUTION

CLIMATE CONTROL

IT INFRASTRUCTURE

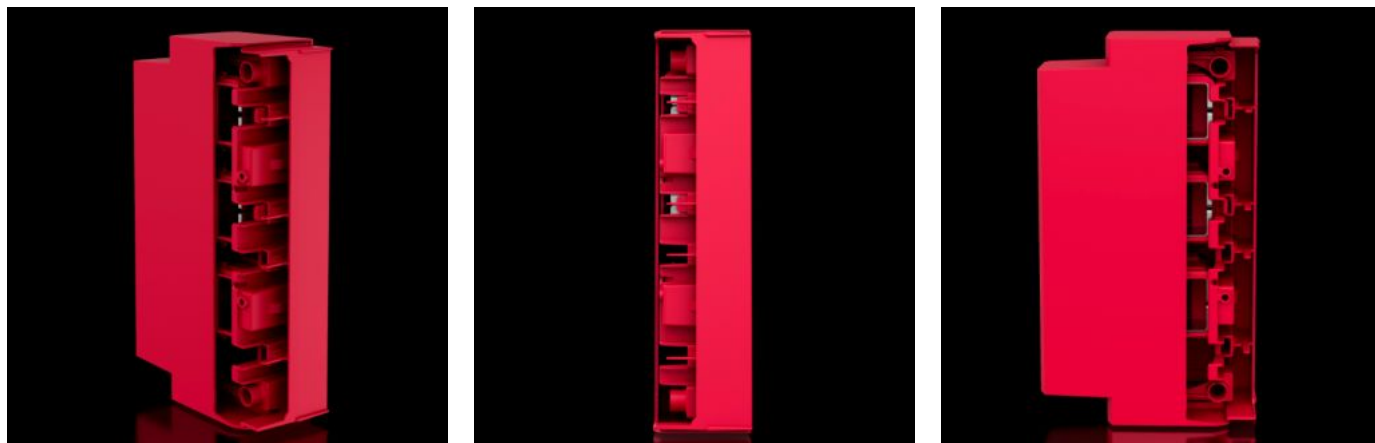
SOFTWARE & SERVICES

FRIEDHELM LOH GROUP



RX 9360.241 - RiLineX connection adapter

Connection adapter RiLineX busbar platform. Ideal for T-connection of horizontal and vertical systems. Convertible for infeed from left or right.



Features

Model No.	RX 9360.241
Benefits	Mounting on the busbar system and cable connection with just one screw Vertical version for feeding the board from the side
Material	Polyamide (PA 6) Fire behavior corresponding to UL 94
Color	RAL 35745
Rated current (max.)	432 A
Rated current max.	710 A
Rated current of round conductor	710 A
Rated current round conductor (UL)	630 A
Rated current laminated copper busbar	950 A
Rated current laminated copper busbar (UL)	910 A

Features

Electrical UL ratings (SCCR)	27.5 kA - 600 V, RMS, unprotected 100 kA - 480 V, circuit breaker max. 800 A, DIVQ/7 100 kA - 600 V, fuse class L max. 1200 A, JDDZ/7
Cable outlet	Axial to the board
For bar systems with center-to-center spacing	60 mm
Number of poles	3-pole
Suitable for busbar system	RiLineX RiLine60
Dimensions	Width: 57.8 mm Height: 239.4 mm Depth: 135.6 mm Width: 2.28 " Height: 9.43 " Depth: 5.34 "
Connection of round conductors	150 - 300 mm ²
Clamping area for laminated copper bars (W x H)	32 x 20 mm 1.26 x 0.79 "
Suitable for busbars	15 x 5/10 20 x 5/10 30 x 5/10
Rated voltage	1,000 V AC 1,500 V DC 600 V AC (UL) 600 V DC (UL)
Overvoltage category	4
Contamination level	3
Standards	IEC/EN 61439-1 UL 508
Rated impulse withstand voltage U _{Imp}	12 kV
Rated insulation voltage U _i	1,000 V

Features

Power loss max.	50 W 171 BTU/h
Protection category IP to IEC 60529	IP 2XB
Maximum operating air humidity	90 %
Operating temperature range	-5 °C...55 °C 23 °F...131 °F
Storage temperature range	-25 °C...75 °C -13 °F...167 °F
Ambient humidity (non-condensing)	10...90 %
Packaging unit	1 pc(s).
Net weight	1 kg
Gross weight	1.185 kg
PCF/VE (cradle-to-gate)	5.51
Customs tariff number	85369010
ETIM 9	EC001531
Product description	RX connection adapter 3-pole, WH: 60x240 mm, conductor connection max. 300 mm ² , clamping area WH: 32x20 mm

Approvals

Approvals	UL + C-UL (listed)
Explanations	Declaration of conformity PCF-declaration