

Rittal – The System.

Faster – better – everywhere.



RX 9365.003

RiLineX baying connector

State: 6/15/2026 (Source: rittal.com/us-en)

ENCLOSURES

POWER DISTRIBUTION

CLIMATE CONTROL

IT INFRASTRUCTURE

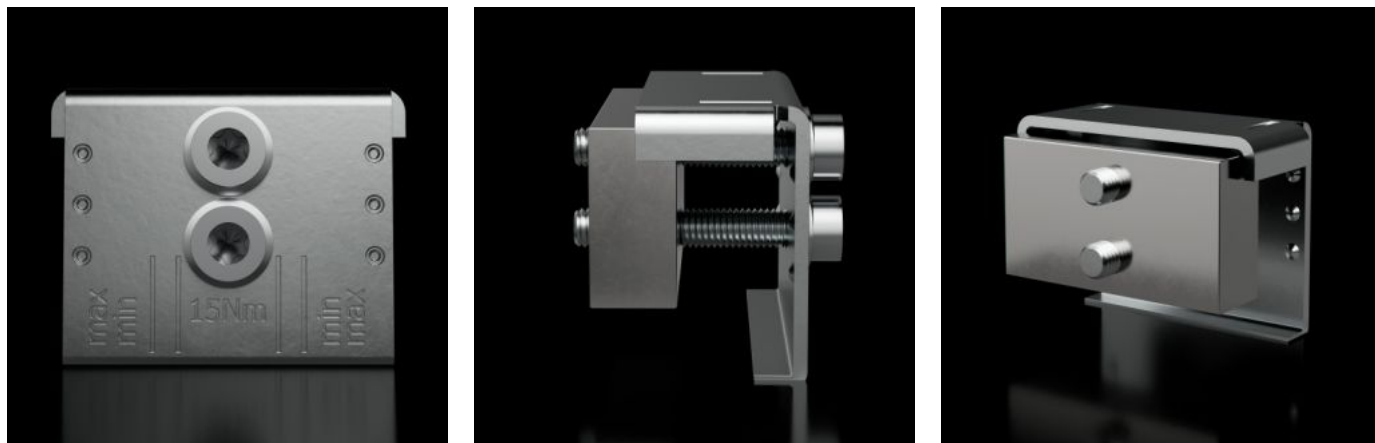
SOFTWARE & SERVICES

FRIEDHELM LOH GROUP



RX 9365.003 - RiLineX baying connector For busbars

Short busbar connector for the baying set, for connecting modular RiLineX boards. The 3-pole baying set (9360103) is additionally required.



Features

Model No.	RX 9365.003
Material	Upper part: carbon steel, zinc-plated Contact plate: E-Cu, tin-plated
Rated current (max.)	800 A
Dimensions	Width: 45 mm Width: 1.77 "
Suitable for busbars	15 x 5/10 20 x 5/10 30 x 5/10
Packaging unit	3 pc(s).
Net weight	0.564 kg
Gross weight	0.572 kg
Copper weight (kg per piece)	0.339
PCF/VE (cradle-to-gate)	3.15
Customs tariff number	73269098
ETIM 9	EC002622

Features

Product description	RX baying connector for E-Cu 15x5-30x10 mm, L: 45 mm
---------------------	--

Approvals

Approvals	UL + C-UL (listed)
Explanations	Declaration of conformity PCF-declaration