

Rittal – The System.

Faster – better – everywhere.



RX 9365.724

RiLineX mounting rail for device adapter

State: 6/10/2026 (Source: rittal.com/us-en)

ENCLOSURES

POWER DISTRIBUTION

CLIMATE CONTROL

IT INFRASTRUCTURE

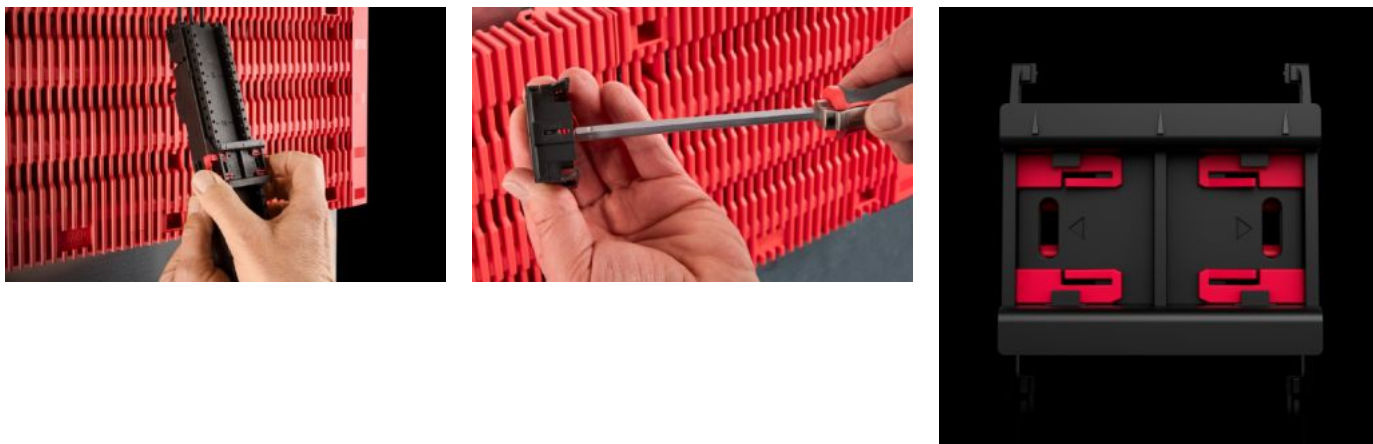
SOFTWARE & SERVICES

FRIEDHELM LOH GROUP



RX 9365.724 - RiLineX mounting rail for device adapter

RiLineX support rails for device adapters of width 45 mm for 60 mm busbar systems. For mounting surface-mounted devices with snap-on fastening on device adapters and device carriers.



Features

Model No.	RX 9365.724
Version	with locking clip
Material	Polyamide (PA 6) Fire behavior corresponding to UL 94
Color	RAL 9005 RAL 35745
Suitable for Model No.	9360710 9360720 9360730
Dimensions	Width: 45 mm Height: 10 mm Width: 1.77 " Height: 0.39 "
Packaging unit	8 pc(s).
Net weight	0.064 kg
Gross weight	0.095 kg
PCF/VE (cradle-to-gate)	0.43

Features

Customs tariff number	39269097
ETIM 9	EC001285
Product description	RX support bar with locking clip, W: 45 mm

Approvals

Explanations	Declaration of conformity PCF-declaration
--------------	--