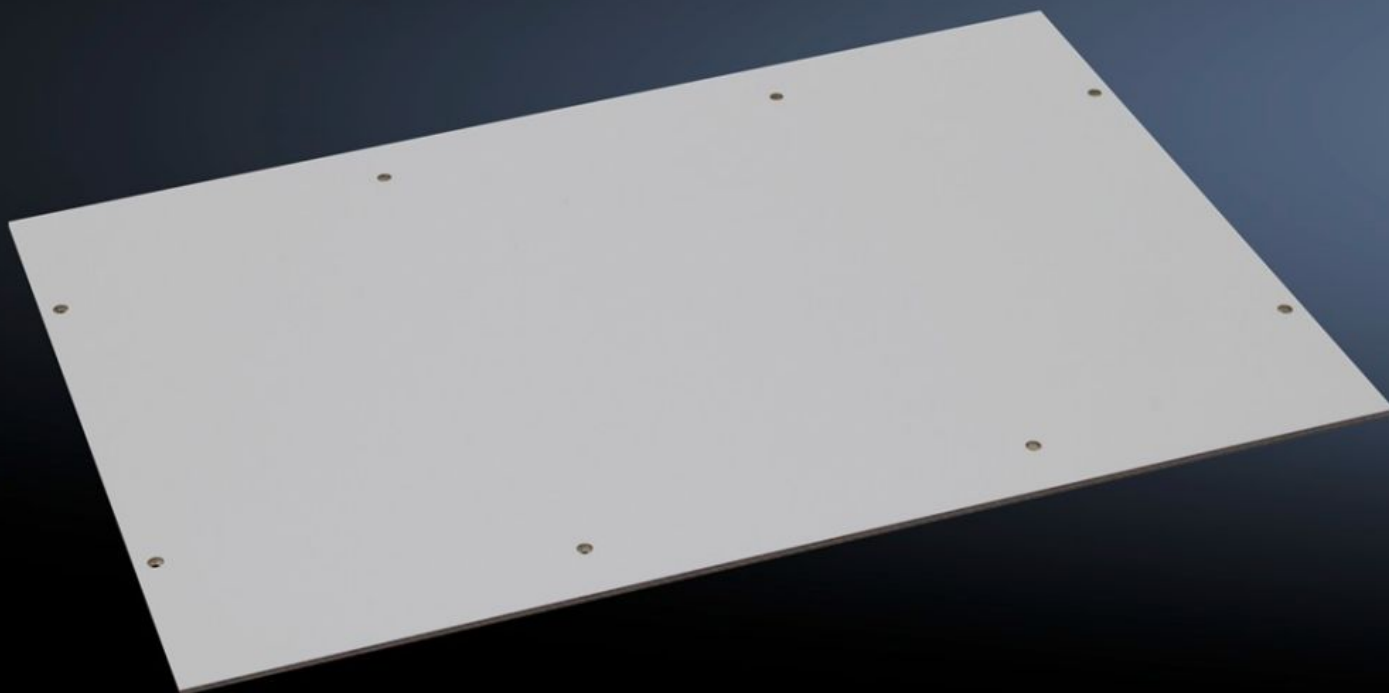


Rittal – The System.

Faster – better – everywhere.



PK 9550.000 Mounting panel

State: 12/8/2025 (Source: [rittal.com/us-en](https://www.rittal.com/us-en))

ENCLOSURES

POWER DISTRIBUTION

CLIMATE CONTROL

IT INFRASTRUCTURE

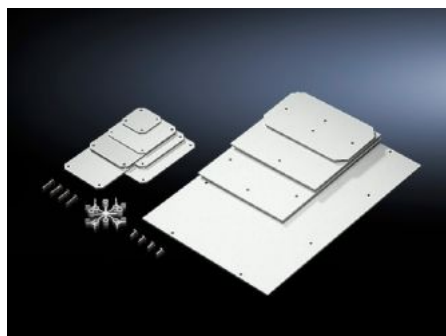
SOFTWARE & SERVICES

FRIEDHELM LOH GROUP



PK 9550.000 - Mounting panel for PK

For individual interior installation.



Features

Model No.	PK 9550.000
Product description	For individual interior installation.
Material	2.5 mm melamine phenol-coated laminated paper
Color	RAL 7035
Supply includes	Mounting panel Self-tapping assembly screws
Dimensions of mounting plate (W x H)	331 mm x 220 mm 13 " x 8.66 "
Suitable for	Enclosure type: PK Width: = 360 mm Height: = 254 mm Enclosure type: PK Width: = 14.2 " Height: = 10 "
Packaging unit	4 pc(s).
Net weight	1.2
Gross weight	1.251
Customs tariff number	39269097
EAN	4028177140134
ETIM 9	EC000213

Features

ECLASS 8.0

27409216