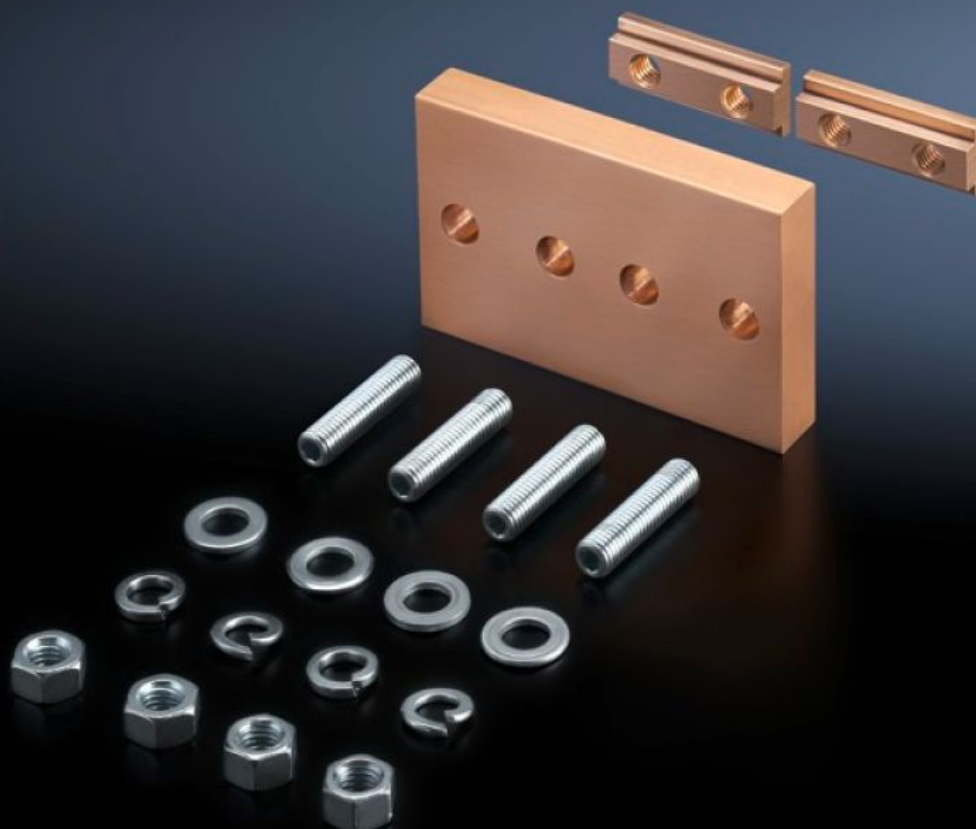
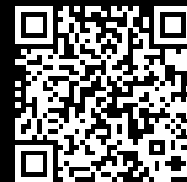


Rittal – The System.

Faster – better – everywhere.



SV 9640.191

Longitudinal connector E-Cu

State: 2/13/2026 (Source: [rittal.com/us-en](https://www.rittal.com/us-en))

ENCLOSURES

POWER DISTRIBUTION

CLIMATE CONTROL

IT INFRASTRUCTURE

SOFTWARE & SERVICES

FRIEDHELM LOH GROUP



SV 9640.191 - Longitudinal connector E-Cu

For easy bayed connection of Maxi-PLS busbars.

Features

Model No.	SV 9640.191
Applications	For simple baying connection of Maxi-PLS busbars
Material	E-Cu
Supply includes	Longitudinal Connectors Sliding Blocks Bolts Assembly components
Suitable for busbars	Maxi-PLS 45 Maxi-PLS 45 S
Packaging unit	1 pc(s).
Net weight	1.7
Gross weight	1.723
Copper weight (kg per piece)	1.52
Customs tariff number	73182900
EAN	4028177642959
ETIM 9	EC001900
ECLASS 8.0	27400613

Approvals

Approvals	UL + C-UL (listed)
Explanations	Declaration of conformity Declaration of conformity UK