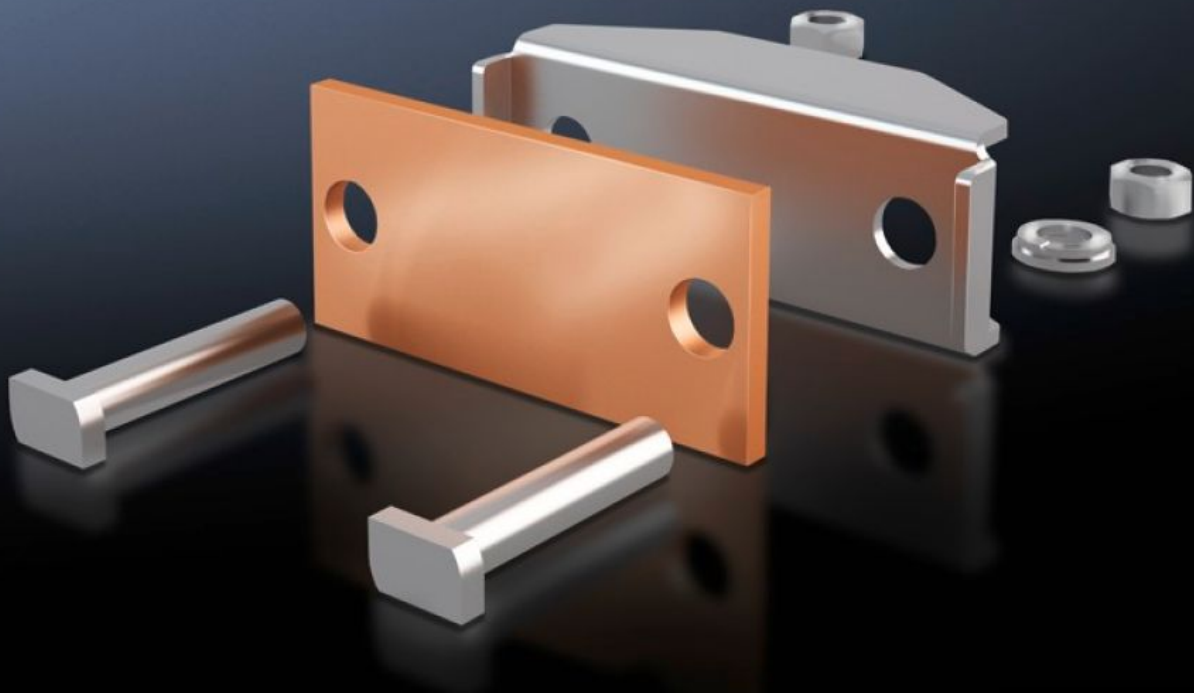


Rittal – The System.

Faster – better – everywhere.



SV 9640.340 Connection Plate

State: 4/22/2026 (Source: rittal.com/us-en)

ENCLOSURES

POWER DISTRIBUTION

CLIMATE CONTROL

IT INFRASTRUCTURE

SOFTWARE & SERVICES

FRIEDHELM LOH GROUP



SV 9640.340 - Connection Plate for laminated copper bars

For the connection of laminated copper bars.

Features

Model No.	SV 9640.340
Product description	For the connection of laminated copper bars.
Material	Connection plate: E-Cu Pressure piece: Stainless steel
Supply includes	Assembly components
Suitable for busbars	Maxi-PLS 45 S/45
Clamping area for laminated copper bars (W x H)	63 x 20 mm 2.48 x 0.79 "
Packaging unit	3 pc(s).
Net weight	1.455 kg
Gross weight	1.477 kg
Copper weight (kg per piece)	0.19
Customs tariff number	73269098
ETIM 9	EC002498
ECLASS 8.0	27379201
Product description	SV Connection plate, clamping area WH: 63x20 mm, (Maxi-PLS 1600/2000)

Approvals

Approvals	UL + C-UL (listed)
-----------	--------------------

Approvals

Explanations

Declaration of conformity

Declaration of conformity UK