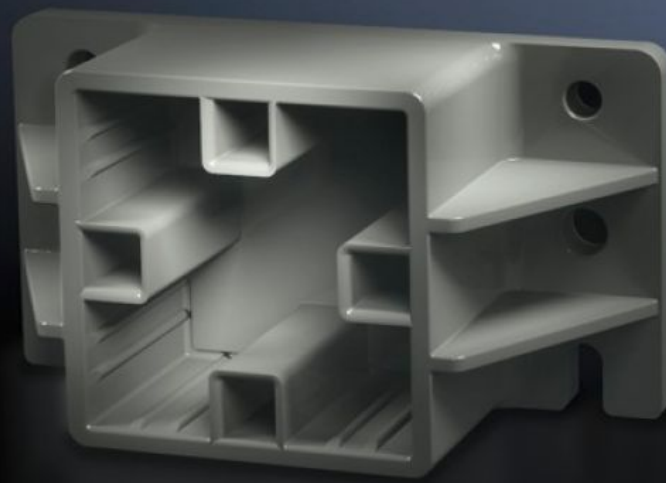


# Rittal – The System.

Faster – better – everywhere.



## SV 9649.010 End support

State: 4/16/2026 (Source: [rittal.com/us-en](http://rittal.com/us-en))

ENCLOSURES

POWER DISTRIBUTION

CLIMATE CONTROL

IT INFRASTRUCTURE

SOFTWARE & SERVICES

FRIEDHELM LOH GROUP



# SV 9649.010 - End support for Maxi-PLS busbars

To attach Maxi-PLS busbars to the sides by inserting into the supports.

## Features

Model No.	SV 9649.010
Product description	For attaching Maxi-PLS busbars when used as a cable connection system. The stepped configuration ensures simple cable installation.
Material	Polyamide Fire protection corresponding to UL 94-V0
Color	Similar to RAL 9011
Supply includes	Assembly components
Suitable for busbars	Maxi-PLS 45 S Maxi-PLS 45
Packaging unit	2 pc(s).
Net weight	0.23 kg
Gross weight	0.284 kg
Customs tariff number	39269097
ETIM 9	EC001166
ECLASS 8.0	27400607
Product description	SV End support, Maxi-PLS 1600/2000

## Approvals

Approvals	ABS DNV-GL Lloyds Register of Shipping UL + C-UL (listed)
-----------	--

# Approvals

---

Explanations

Declaration of conformity

Declaration of conformity UK