

**Rittal – The System.**

Faster – better – everywhere.



**SV 9650.261**

**Maxi-PLS Busbar, E-Cu**

State: 6/30/2026 (Source: [rittal.com/us-en](http://rittal.com/us-en))

ENCLOSURES

POWER DISTRIBUTION

CLIMATE CONTROL

IT INFRASTRUCTURE

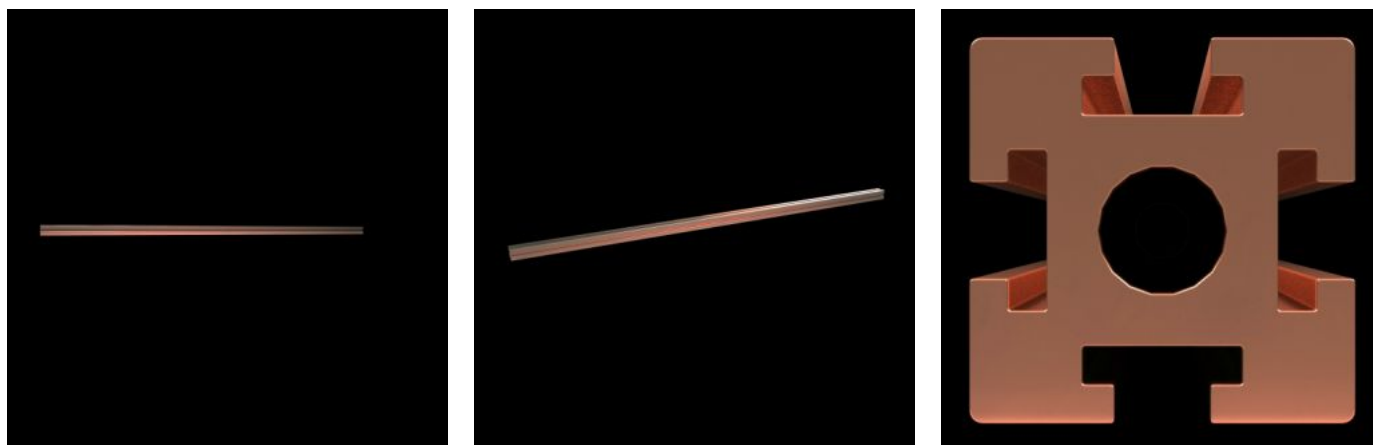
SOFTWARE & SERVICES

FRIEDHELM LOH GROUP



# SV 9650.261 - Maxi-PLS Busbar, E-Cu for Maxi-PLS 60 system

Dimensions: 60x60 mm, bar cross-section: 2323 mm<sup>2</sup>



## Features

Model No.	SV 9650.261
Product description	For assembling cable connection systems.
Material	E-Cu
Cross-section	2,323 mm <sup>2</sup>
Length	891 mm 35.1 "
Note	May be cut to length as required
Suitable for	Width: = 1,000 mm Width: = 39.4 "
Packaging unit	1 pc(s).
Net weight	18.42 kg
Gross weight	18.44 kg
Copper weight (kg per piece)	18.42
Customs tariff number	74071000
ETIM 9	EC002525

# Features

---

ECLASS 8.0	27370303
Product description	SV Maxi-PLS busbar E-Cu, L: 891 mm, Maxi-PLS 3200

---

# Approvals

---

Approvals	UL + C-UL (listed)
Explanations	Manufacturer's declaration Declaration of conformity Declaration of conformity UK

---