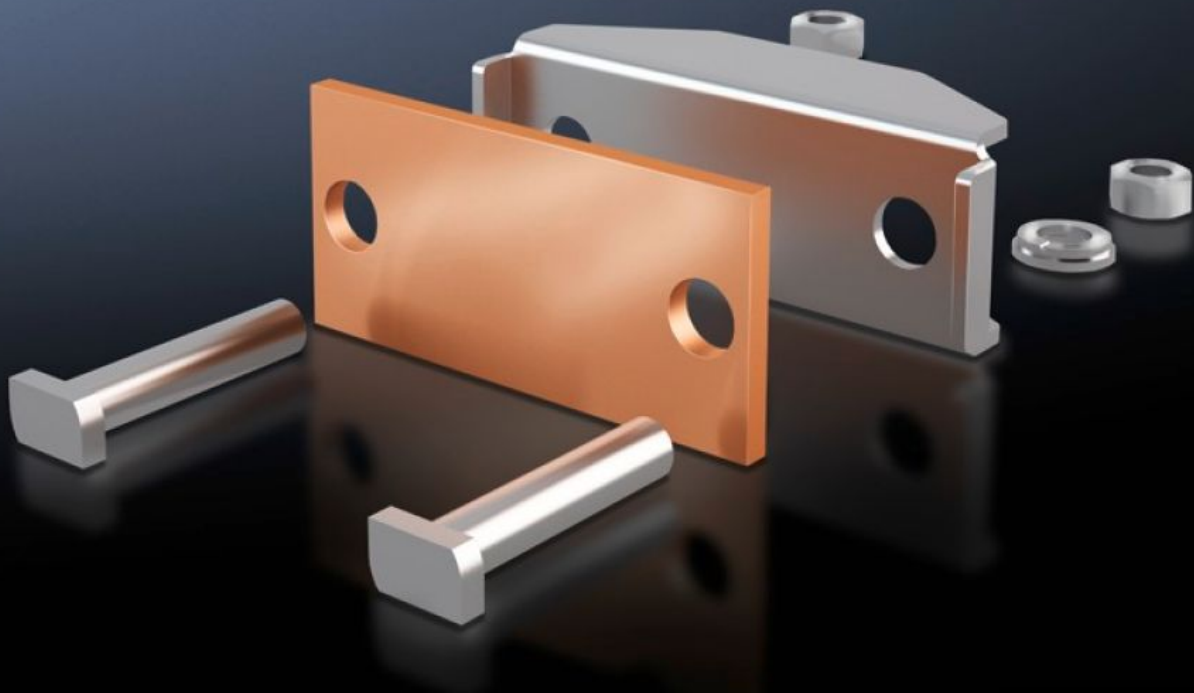


**Rittal – The System.**

Faster – better – everywhere.



# SV 9650.330 Connection Plate

State: 2/10/2026 (Source: [rittal.com/us-en](http://rittal.com/us-en))

ENCLOSURES

POWER DISTRIBUTION

CLIMATE CONTROL

IT INFRASTRUCTURE

SOFTWARE & SERVICES

FRIEDHELM LOH GROUP



# SV 9650.330 - Connection Plate for laminated copper bars

For the connection of laminated copper bars.

## Features

Model No.	SV 9650.330
Product description	For the connection of laminated copper bars.
Material	Connection plate: E-Cu Pressure piece: Stainless steel
Supply includes	Assembly components
Suitable for busbars	Maxi-PLS 60
Clamping area for laminated copper bars (W x H)	32 x 20 mm 1.26 x 0.79 "
Packaging unit	3 pc(s).
Net weight	1.029
Gross weight	1.237
Copper weight (kg per piece)	0.13
Customs tariff number	73269098
EAN	4028177239517
ETIM 9	EC002498
ECLASS 8.0	27379201

## Approvals

Approvals	UL + C-UL (listed)
Explanations	Declaration of conformity Declaration of conformity UK