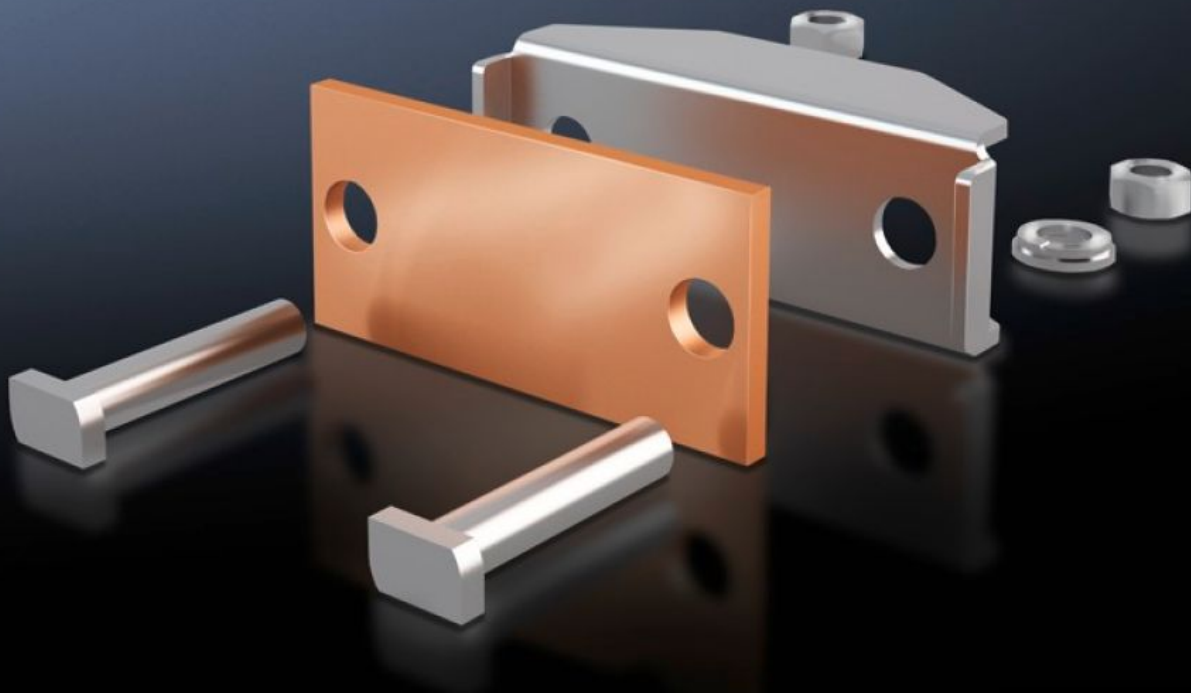


Rittal – The System.

Faster – better – everywhere.



SV 9650.340 Connection Plate

State: 6/4/2026 (Source: rittal.com/us-en)

ENCLOSURES

POWER DISTRIBUTION

CLIMATE CONTROL

IT INFRASTRUCTURE

SOFTWARE & SERVICES

FRIEDHELM LOH GROUP



SV 9650.340 - Connection Plate for laminated copper bars

For the connection of laminated copper bars.

Features

| | |
|---|--|
| Model No. | SV 9650.340 |
| Product description | For the connection of laminated copper bars. |
| Material | Connection plate: E-Cu Pressure piece: Stainless steel |
| Supply includes | Assembly components |
| Suitable for busbars | Maxi-PLS 60 |
| Clamping area for laminated copper bars (W x H) | 63 x 20 mm 2.48 x 0.79 " |
| Packaging unit | 3 pc(s). |
| Net weight | 1.434 kg |
| Gross weight | 1.653 kg |
| Copper weight (kg per piece) | 0.19 |
| Customs tariff number | 73269098 |
| ETIM 9 | EC002498 |
| ECLASS 8.0 | 27379201 |
| Product description | SV Connection plate, clamping area WH: 63x20 mm, (Maxi-PLS 3200) |

Approvals

| | |
|-----------|--------------------|
| Approvals | UL + C-UL (listed) |
|-----------|--------------------|

Approvals

Explanations

Declaration of conformity

Declaration of conformity UK