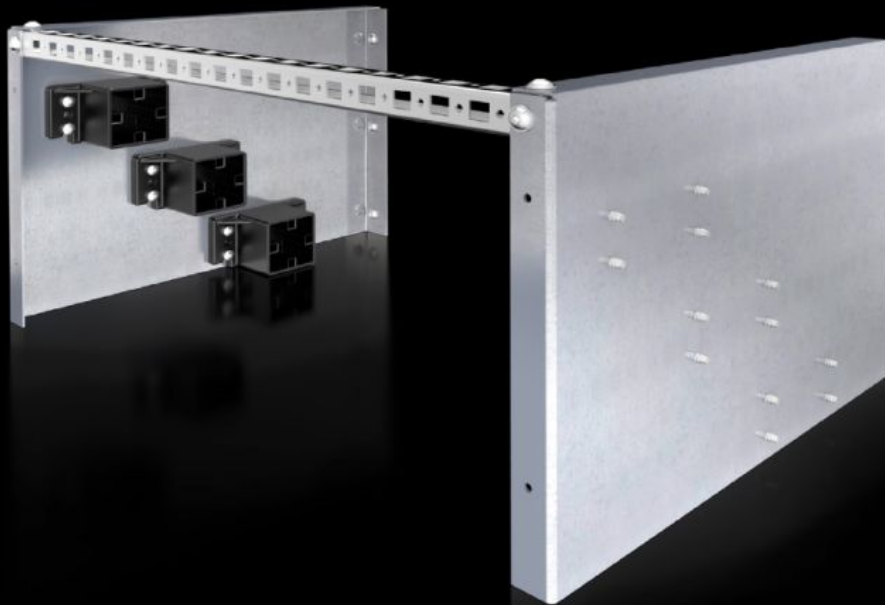


Rittal – The System.

Faster – better – everywhere.



SV 9660.980 Compact infeed

State: 4/18/2026 (Source: rittal.com/us-en)

ENCLOSURES

POWER DISTRIBUTION

CLIMATE CONTROL

IT INFRASTRUCTURE

SOFTWARE & SERVICES

FRIEDHELM LOH GROUP



SV 9660.980 - Compact infeed for Maxi-PLS

For individual use as a 3-pole cable connection busbar system. Direct mounting on the mounting plate or chassis.

Features

Model No.	SV 9660.980
Product description	For individual use as a 3-pole cable connection bar system. Direct mounting on the mounting plate or punched section without mounting flange.
Material	End support: Polyamide (PA 6) Retaining plate: Carbon steel, zinc-plated Punched rail: Carbon steel, zinc-plated
Supply includes	6 end supports 2 support plates for end supports 1 punched rail 23 x 23 mm (length 495 mm) Assembly components
Suitable for busbars	Maxi-PLS 45 S/45
Packaging unit	1 pc(s).
Net weight	5.221 kg
Gross weight	5.7 kg
Customs tariff number	85369001
ETIM 9	EC004592
ECLASS 8.0	27400613
Product description	SV Compact infeed, for Maxi-PLS busbar, (Maxi-PLS 1600/2000)

Approvals

Explanations	Declaration of conformity Declaration of conformity UK
--------------	---