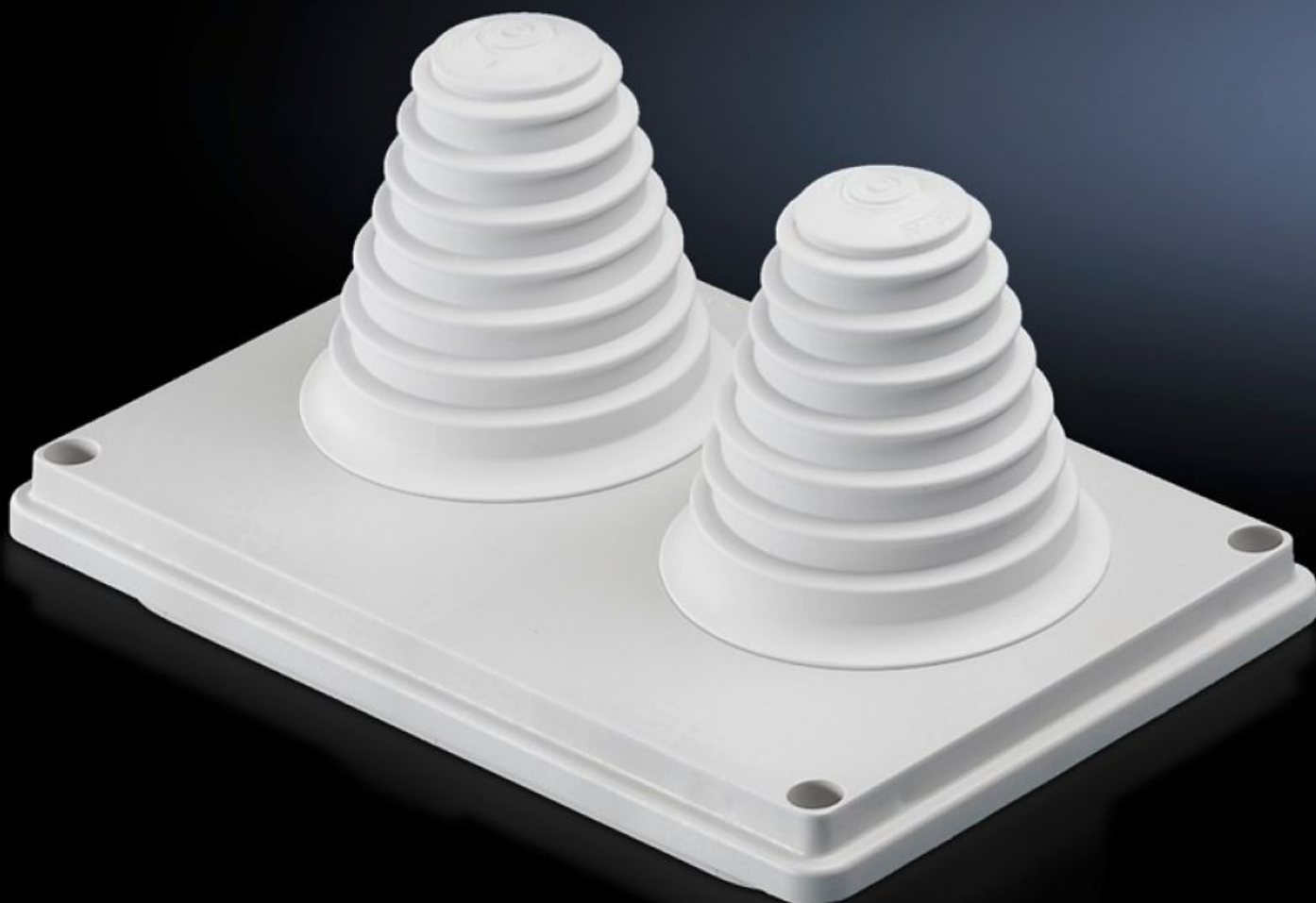
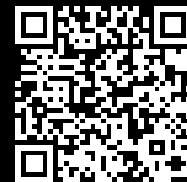


Rittal – The System.

Faster – better – everywhere.



SV 9665.780 Cable entry flange

State: 2/10/2026 (Source: [rittal.com/us-en](https://www.rittal.com/us-en))

ENCLOSURES

POWER DISTRIBUTION

CLIMATE CONTROL

IT INFRASTRUCTURE

SOFTWARE & SERVICES

FRIEDHELM LOH GROUP



SV 9665.780 - Cable entry flange for roof plate

Cable entry gland for roof plates, with metric knockouts, seal membranes, cable entry glands, or solid.



Features

Model No.	SV 9665.780
Version	With entry glands up to Ø 66 mm
Product description	For simple, secure cable entry in the roof zone.
Material	Insulating material
Color	RAL 7035
Supply includes	Seal
Dimensions	Width: 250 mm Depth: 160 mm Width: 9.84 " Depth: 6.3 "
Protection category IP to IEC 60529	IP 55
Packaging unit	1 pc(s).
Net weight	0.38
Gross weight	0.39
Customs tariff number	39269097
EAN	4028177382473
ETIM 9	EC000211

Features

ECLASS 8.0

27142421