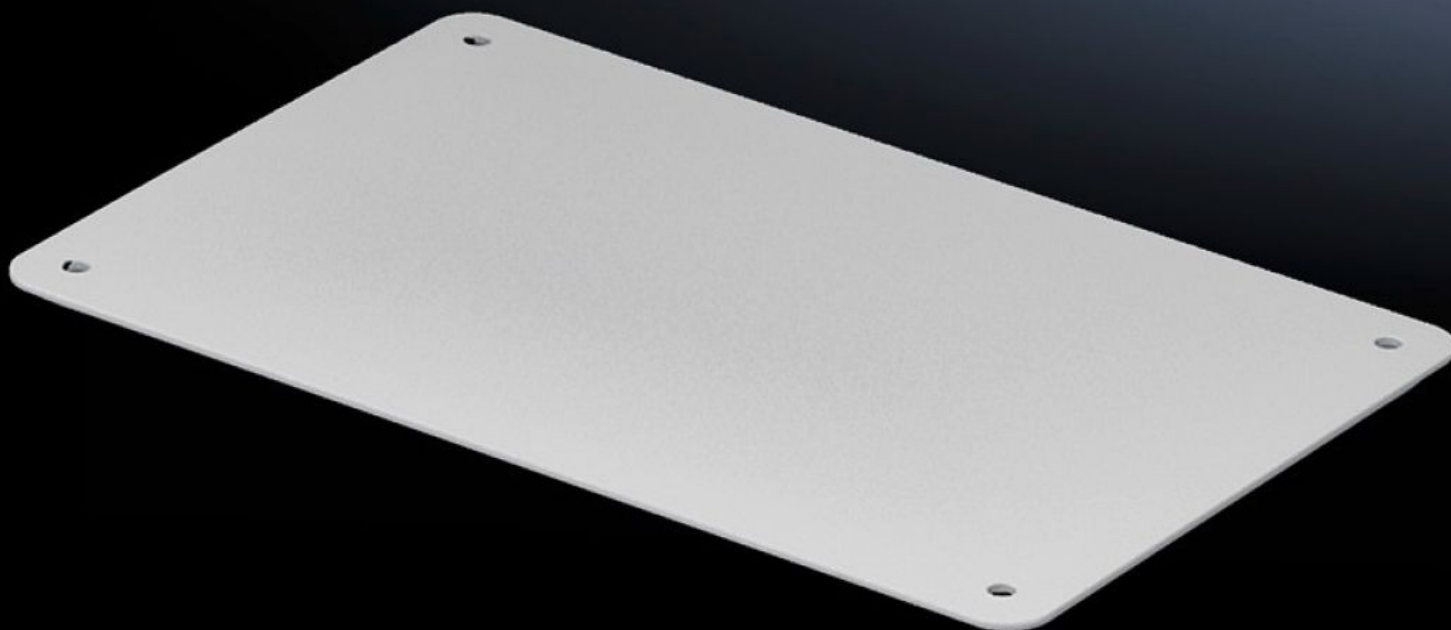
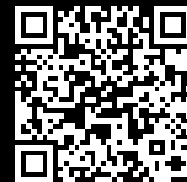


Rittal – The System.

Faster – better – everywhere.



SV 9665.785

Cable entry flange

State: 8/1/2025 (Source: [rittal.com/us-en](https://www.rittal.com/us-en))

ENCLOSURES

POWER DISTRIBUTION

CLIMATE CONTROL

IT INFRASTRUCTURE

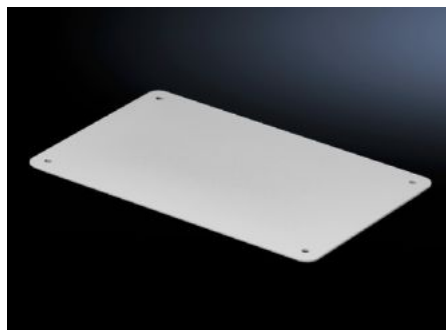
SOFTWARE & SERVICES

FRIEDHELM LOH GROUP



SV 9665.785 - Cable entry flange for roof plate

Cable entry gland for roof plates, with metric knockouts, seal membranes, cable entry glands, or solid.



Features

Model No.	SV 9665.785
Version	Solid
Product description	For simple, secure cable entry in the roof zone.
Material	Carbon steel, spray finished
Color	RAL 7035
Supply includes	Seal
Dimensions	Width: 250 mm Depth: 160 mm Width: 9.84 " Depth: 6.3 "
Protection category IP to IEC 60529	IP 55
Packaging unit	4 pc(s).
Net weight	2.388
Gross weight	2.645
Customs tariff number	73269098
EAN	4028177525719
ETIM 9	EC000211

Features

ECLASS 8.0

27142421