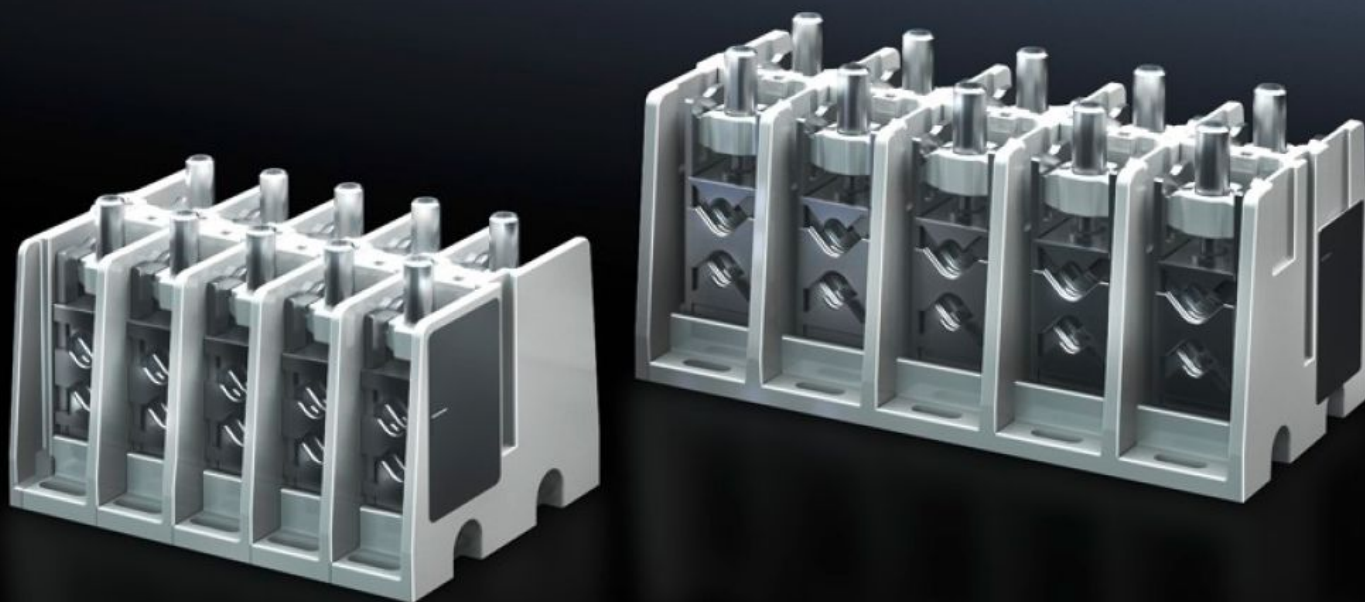
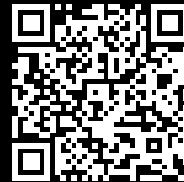


# Rittal – The System.

Faster – better – everywhere.



## SV 9666.340

### Connection terminal block

State: 6/28/2025 (Source: [rittal.com/us-en](http://rittal.com/us-en))

ENCLOSURES

POWER DISTRIBUTION

CLIMATE CONTROL

IT INFRASTRUCTURE

SOFTWARE & SERVICES

FRIEDHELM LOH GROUP



# SV 9666.340 - Connection terminal block

To connect copper and aluminum conductors and laminated copper bars.

## Features

Model No.	SV 9666.340
Product description	For connecting copper and aluminum conductors. For laminated copper bars or solid and stranded conductors with crimped ferrules.
Material	Duroplastic
Color	RAL 7035
Supply includes	Assembly components
Mounting tip	Contact hazard protection module 9666.020 is required to cover the connection terminal block
Rated current max.	250 A
Number of poles	5-pole
Connection of round conductors	16 - 150 2 x 16 - 70
Clamping area for laminated copper bars (W x H)	17 x 21 mm 0.67 x 0.83 "
Packaging unit	1 pc(s).
Net weight	3.013
Gross weight	3.213
Customs tariff number	39211900
EAN	4028177676329
ETIM 9	EC001894
ECLASS 8.0	27400613

# Approvals

---

Explanations

Declaration of conformity

Declaration of conformity UK