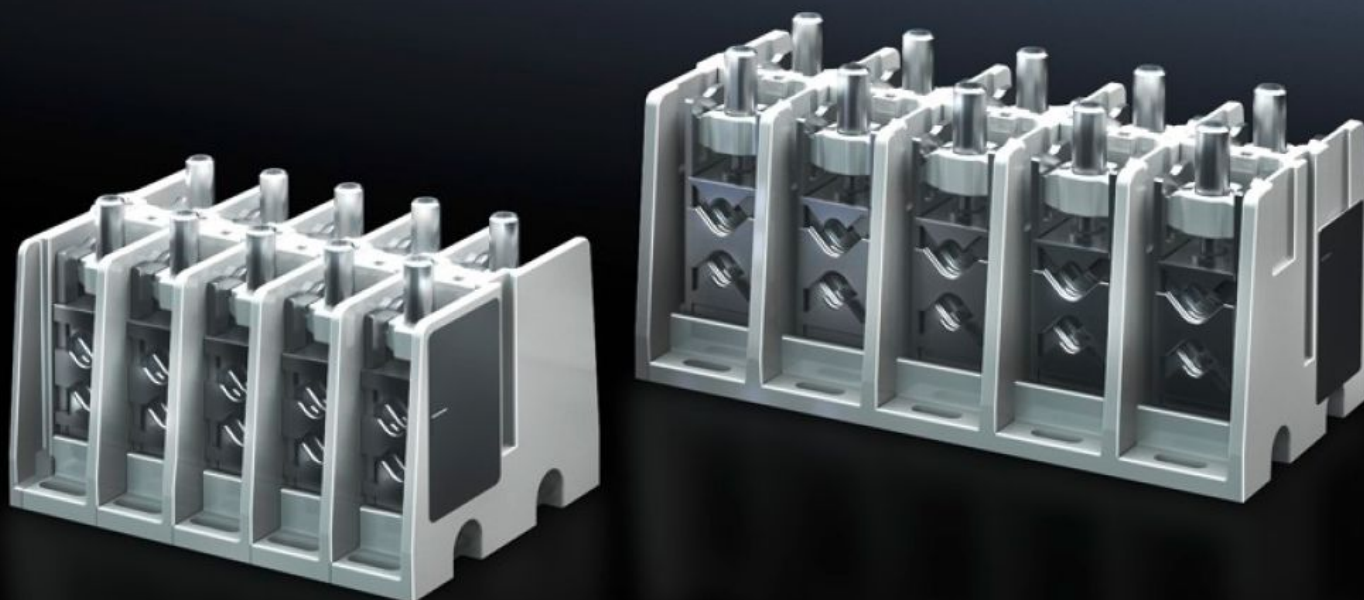


# Rittal – The System.

Faster – better – everywhere.



## SV 9666.350 Connection terminal block

State: 8/18/2025 (Source: [rittal.com/us-en](http://rittal.com/us-en))

ENCLOSURES

POWER DISTRIBUTION

CLIMATE CONTROL

IT INFRASTRUCTURE

SOFTWARE & SERVICES

FRIEDHELM LOH GROUP



# SV 9666.350 - Connection terminal block

To connect copper and aluminum conductors and laminated copper bars.

## Features

|   |  |
|---|--|
| Model No.                                       | SV 9666.350  |
| Product description                             | For connecting copper and aluminum conductors. For laminated copper bars or solid and stranded conductors with crimped ferrules. |
| Material  | Duroplastic  |
| Color   | RAL 7035   |
| Supply includes                                 | Assembly components  |
| Mounting tip                                    | Contact hazard protection module 9666.020 is required to cover the connection terminal block                                     |
| Rated current max.                              | 400 A  |
| Number of poles                                 | 5-pole   |
| Connection of round conductors                  | 50 - 240<br>2 x 25 - 120   |
| Clamping area for laminated copper bars (W x H) | 25 x 21 mm<br>0.98 x 0.83 "  |
| Packaging unit                                  | 1 pc(s).   |
| Net weight                                      | 4.807  |
| Gross weight                                    | 5.08   |
| Customs tariff number                           | 39211900   |
| EAN   | 4028177676336  |
| ETIM 9  | EC001894   |
| ECLASS 8.0                                      | 27400613   |

# Approvals

---

Explanations

Declaration of conformity

Declaration of conformity UK