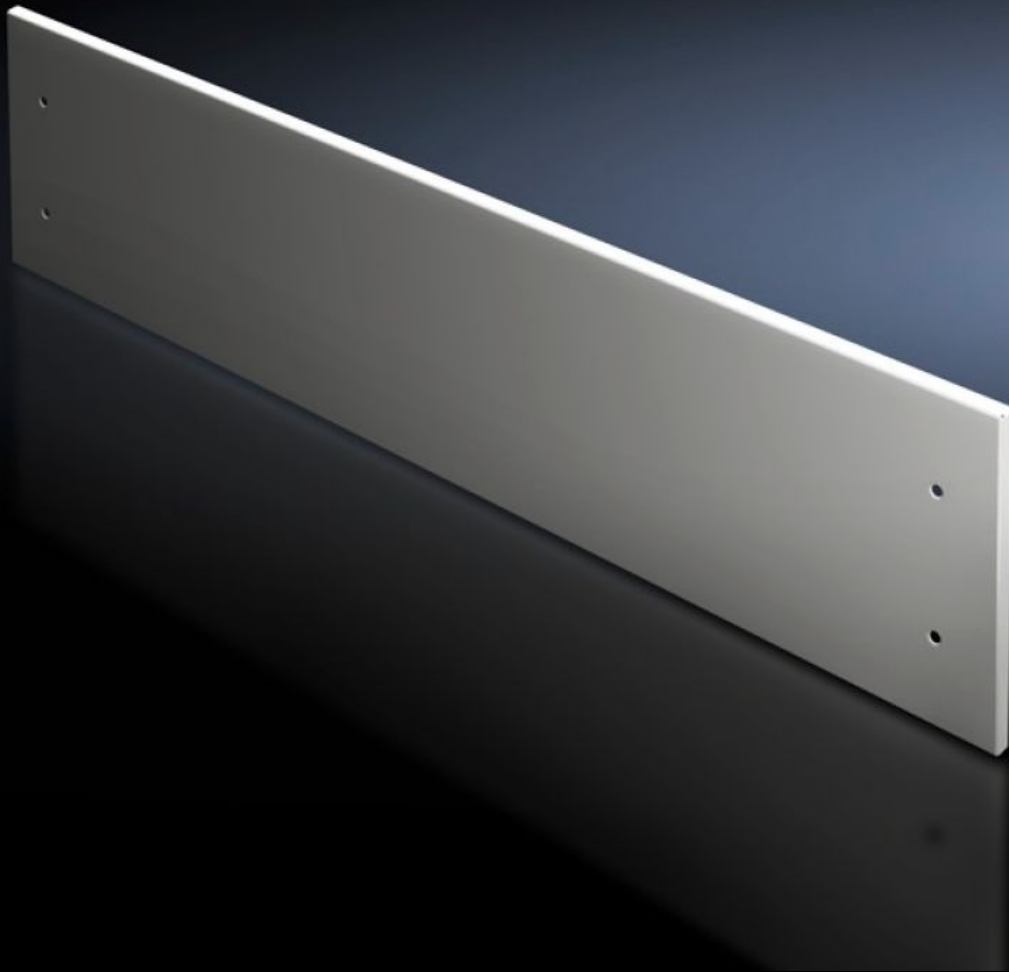


# Rittal – The System.

Faster – better – everywhere.



## SV 9672.324

### Front trim panel, top

State: 6/9/2026 (Source: [rittal.com/us-en](http://rittal.com/us-en))

ENCLOSURES

POWER DISTRIBUTION

CLIMATE CONTROL

IT INFRASTRUCTURE

SOFTWARE & SERVICES

FRIEDHELM LOH GROUP



# SV 9672.324 - Front trim panel, top for TS

Top closure panel when partial doors are used.

## Features

Model No.	SV 9672.324
Product description	To finish off the modular front design at the top when using partial doors. The front trim panels may be removed from the outside by unscrewing. The cross member required for mounting is included with the supply of the mounted partial doors.
Material	Carbon steel, 2 mm
Surface finish	Textured paint
Color	RAL 7035
Supply includes	Assembly components
Height front panel top	300 mm 11.8 "
Suitable for	Width: = 400 mm Width: = 15.7 "
Packaging unit	1 pc(s).
Net weight	2.357 kg
Gross weight	2.557 kg
Customs tariff number	83024200
ETIM 9	EC002525
ECLASS 8.0	27142423
Product description	SV Front trim panel, for TS, top, WH: 400x300 mm, protection category IP 54