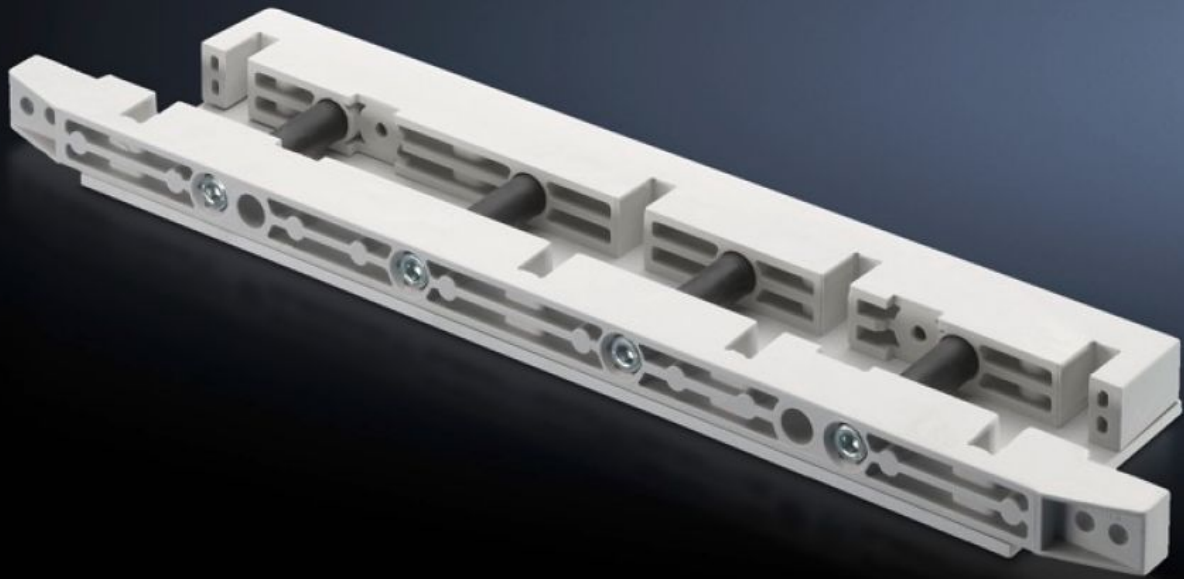


# Rittal – The System.

Faster – better – everywhere.



## SV 9674.430 End support

State: 6/18/2026 (Source: [rittal.com/us-en](http://rittal.com/us-en))

ENCLOSURES

POWER DISTRIBUTION

CLIMATE CONTROL

IT INFRASTRUCTURE

SOFTWARE & SERVICES

FRIEDHELM LOH GROUP



# SV 9674.430 - End support for fuse-switch disconnecter section

End support for the distribution busbar system, providing vertical support for the distribution busbar system with infeed from above.

## Features

Model No.	SV 9674.430
Product description	End support for the distribution busbar system of the fuse-switch disconnecter section, for vertical support of the distribution busbar system with infeed from above.
Material	Duroplastic polyester
Supply includes	Incl. mounting bracket and screws
Suitable for busbars	Width: 100 Height: 10 mm Width: 3.94 Height: 0.39 "
Number of poles	3-pole 4-pole
Packaging unit	1 pc(s).
Net weight	1.679 kg
Gross weight	1.72 kg
Customs tariff number	39269097
ETIM 9	EC001166
ECLASS 8.0	27400613
Product description	SV End support, for busbar WH: 100x10 mm, (fuse-switch disconnecter section)

# Approvals

---

Explanations

Declaration of conformity

Declaration of conformity UK