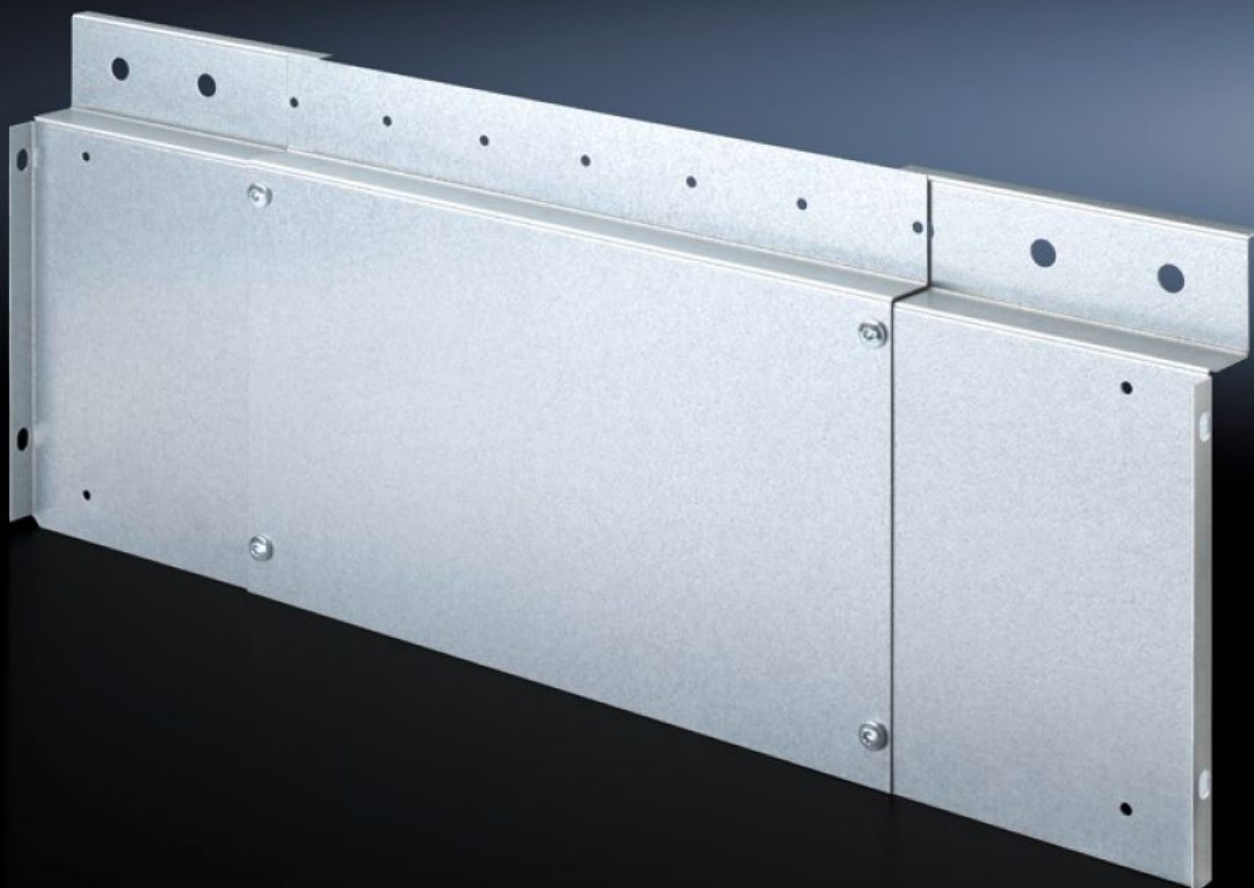
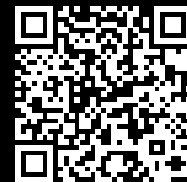


Rittal – The System.

Faster – better – everywhere.



SV 9674.550 Wiring Trim Panel

State: 12/8/2025 (Source: [rittal.com/us-en](https://www.rittal.com/us-en))

ENCLOSURES

POWER DISTRIBUTION

CLIMATE CONTROL

IT INFRASTRUCTURE

SOFTWARE & SERVICES

FRIEDHELM LOH GROUP



SV 9674.550 - Wiring Trim Panel

Wiring system for Ri4Power with internal compartmentalization.

Features

| | |
|-----------------------|---|
| Model No. | SV 9674.550 |
| Product description | Inner front cover of the main busbar system with option for mounting a wiring duct (W x D) 40 x 20 mm. Suitable for use in RiPower switchgear with 300 mm-high front trim panels. The horizontal cable routing is carried out behind the front trim panels. |
| Material | Carbon steel |
| Surface finish | Zinc-plated |
| Supply includes | Assembly components |
| Note | For vertical cable routing, mounting brackets for compartment dividers and circuit-breaker support rails enable the installation of a wiring channel, thanks to pre-punched cut-outs. |
| Suitable for | Width: = 400 mm = 600 mm Width: = 15.7 " = 23.6 " |
| Packaging unit | 1 pc(s). |
| Net weight | 1.2 |
| Gross weight | 1.279 |
| Customs tariff number | 73269098 |
| EAN | 4028177697300 |
| ETIM 9 | EC002617 |
| ECLASS 8.0 | 27142423 |