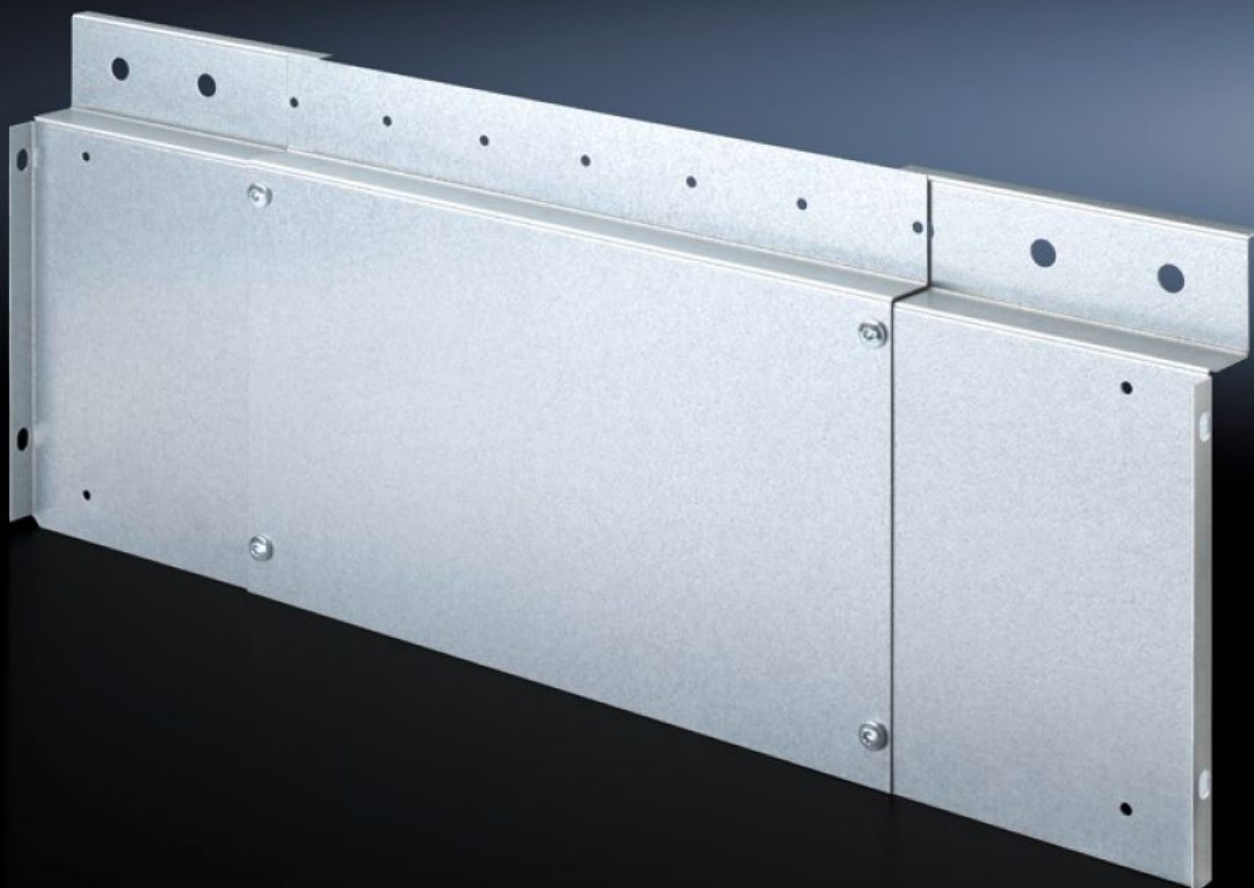


Rittal – The System.

Faster – better – everywhere.



SV 9674.560

Wiring Trim Panel

State: 1/9/2026 (Source: [rittal.com/us-en](https://www.rittal.com/us-en))

ENCLOSURES

POWER DISTRIBUTION

CLIMATE CONTROL

IT INFRASTRUCTURE

SOFTWARE & SERVICES

FRIEDHELM LOH GROUP



SV 9674.560 - Wiring Trim Panel

Wiring system for Ri4Power with internal compartmentalization.

Features

Model No.	SV 9674.560
Product description	Inner front cover of the main busbar system with option for mounting a wiring duct (W x D) 40 x 20 mm. Suitable for use in RiPower switchgear with 300 mm-high front trim panels. The horizontal cable routing is carried out behind the front trim panels.
Material	Carbon steel
Surface finish	Zinc-plated
Supply includes	Assembly components
Note	For vertical cable routing, mounting brackets for compartment dividers and circuit-breaker support rails enable the installation of a wiring channel, thanks to pre-punched cut-outs.
Suitable for	Width: = 800 mm = 1,000 mm = 1,200 mm Width: = 31.5 " = 39.4 " = 47.2 "
Packaging unit	1 pc(s).
Net weight	2.4
Gross weight	2.46
Customs tariff number	73269098
EAN	4028177697317
ETIM 9	EC002617
ECLASS 8.0	27142423