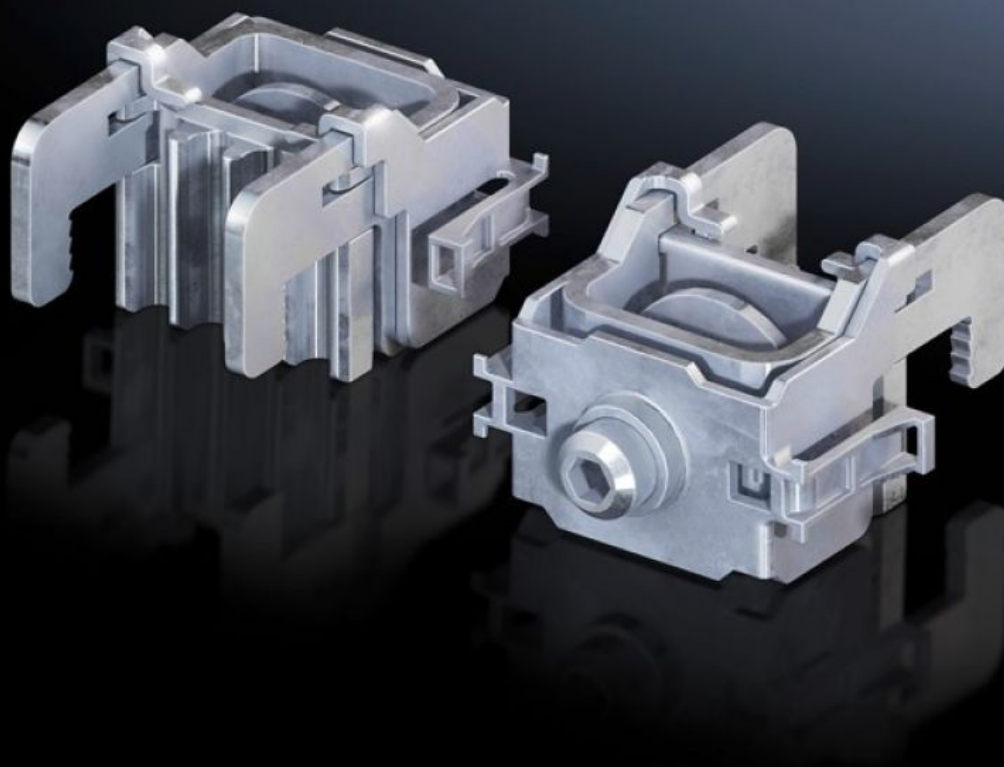


Rittal – The System.

Faster – better – everywhere.



SV 9677.460 Contact terminal

State: 12/22/2025 (Source: rittal.com/us-en)

ENCLOSURES

POWER DISTRIBUTION

CLIMATE CONTROL

IT INFRASTRUCTURE

SOFTWARE & SERVICES

FRIEDHELM LOH GROUP



SV 9677.460 - Contact terminal For NH in-line fuse-switch disconnectors/connector adapters

For mounting components on busbar systems with 185 mm center-to-center spacing, no drilling required.

Features

Model No.	SV 9677.460
Product description	For mounting components on busbar systems with 185 mm center-to-center spacing, no drilling required.
Material	Carbon steel, zinc-plated E-Cu, tin-plated
For size	1 - 3 and connection adaptor
Note	Only suitable for use on busbar system with contact hazard protection cover (cover section, slotted)
Packaging unit	3 pc(s).
Net weight	0.36
Gross weight	0.472
Copper weight (kg per piece)	0.051
PCF/VE (cradle-to-gate)	1.7 kg CO2 eq (Cat B)
Information regarding the PCF class	Category B: PCF value (cradle-to-gate) calculated approximately on the basis of the product weight and self-declared
Customs tariff number	73182900
EAN	4028177705203
ETIM 9	EC000001
ECLASS 8.0	27141146