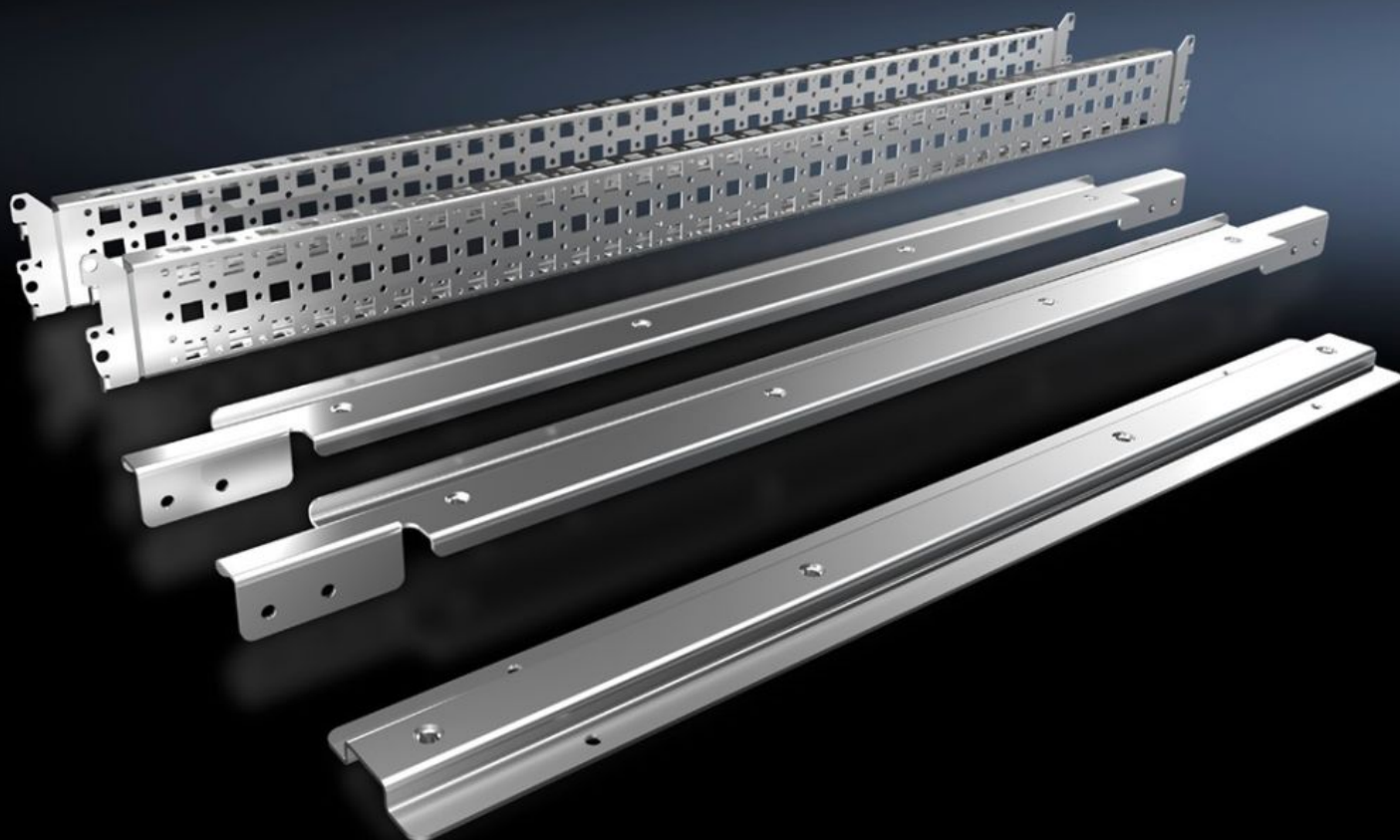
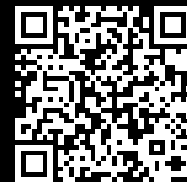


Rittal – The System.

Faster – better – everywhere.



SV 9677.531 System Attachment

State: 12/8/2025 (Source: rittal.com/us-en)

ENCLOSURES

POWER DISTRIBUTION

CLIMATE CONTROL

IT INFRASTRUCTURE

SOFTWARE & SERVICES

FRIEDHELM LOH GROUP



SV 9677.531 - System Attachment for VX, TS

For attaching busbar systems with 185 mm center-to-center spacing in enclosures.

Features

Model No.	SV 9677.531
Product description	For fastening busbar systems with 185 mm center distance in the enclosure.
Material	Carbon steel
Surface finish	Zinc-plated
Supply includes	2 system fittings (left/right) 2 punched sections Assembly components System attachment (center)
Mounting tip	For variable depth settings in the busbar system inside the control cabinet, the 23 x 64 mm system chassis for VX (for indoor mounting levels) is required. The selection will be dictated by the depth of the cabinet.
Packaging unit	1 pc(s).
Net weight	4.9
Gross weight	5.14
PCF/VE (cradle-to-gate)	19.4 kg CO2 eq (Cat B)
Information regarding the PCF class	Category B: PCF value (cradle-to-gate) calculated approximately on the basis of the product weight and self-declared
Customs tariff number	83024900
EAN	4028177923300
ETIM 9	EC002270
ECLASS 8.0	27400613