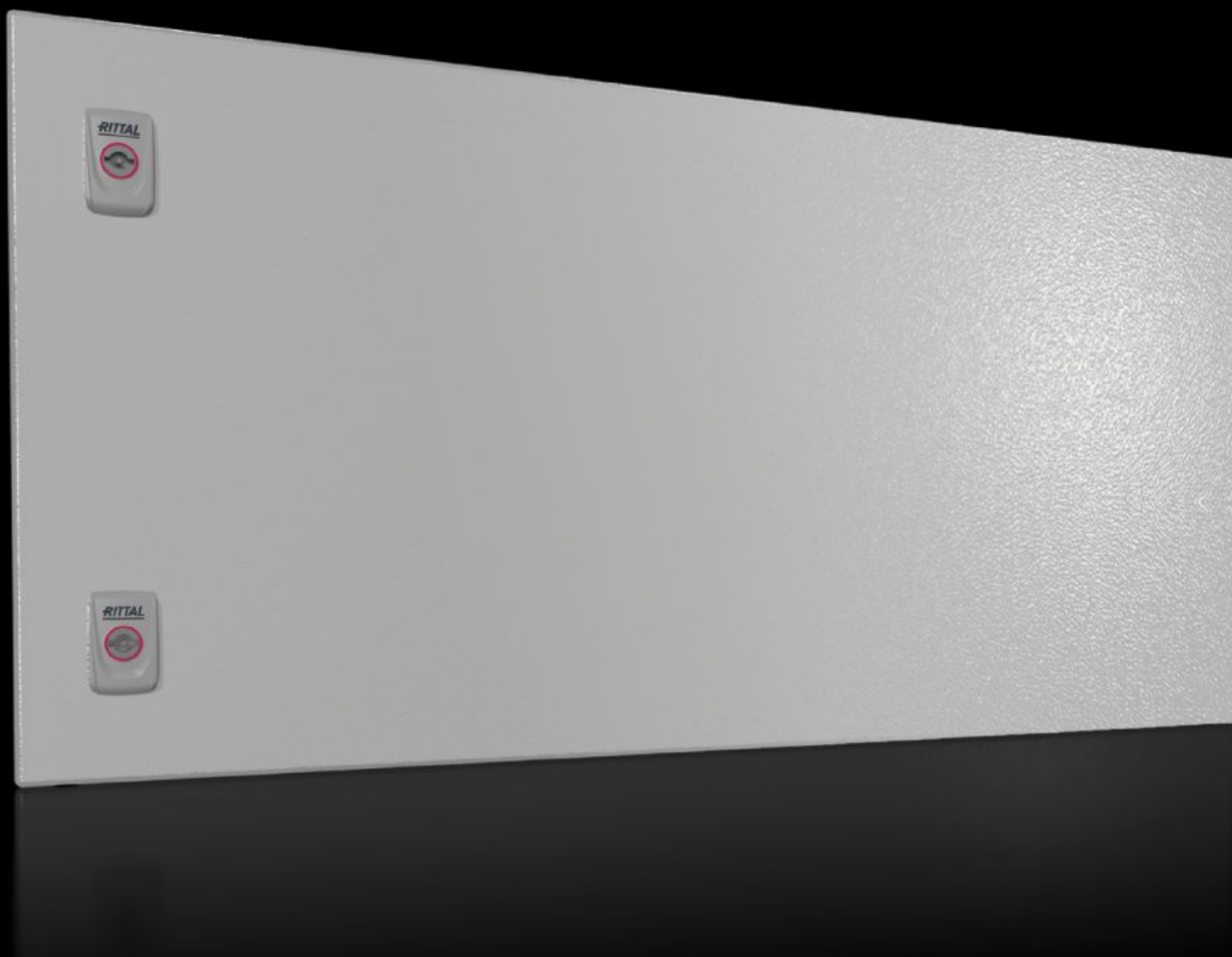
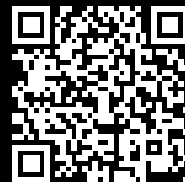


Rittal – The System.

Faster – better – everywhere.



SV 9682.184 Partial door

State: 1/30/2026 (Source: rittal.com/us-en)

ENCLOSURES

POWER DISTRIBUTION

CLIMATE CONTROL

IT INFRASTRUCTURE

SOFTWARE & SERVICES

FRIEDHELM LOH GROUP



SV 9682.184 - Partial door for VX

Door may be optionally hinged on the right or left.

Features

Model No.	SV 9682.184
Product description	Suitable for VX enclosures instead of a door or rear panel. The partial doors can be combined with each other. A front trim panel is required at the top and bottom. Door may be optionally hinged on the right or left. Installation of the SZ 2305.000 monitor frame is possible in doors without a viewing window (height 600–1,000 mm). The standard double-bit lock insert may be exchanged for Type A lock inserts.
Material	Carbon steel, 2 mm
Surface finish	Textured paint
Color	RAL 7035
Supply includes	Partial door Cross member Hinges Lock components Assembly components
Note	Swing angle of partial doors max. 130°
Lock	No. of locks: 2
Dimensions	Width: 800 mm Height: 400 mm Width: 31.5 " Height: 15.7 "
Suitable for	Width: = 800 mm Width: = 31.5 "
Protection category IP to IEC 60529	IP 54
Packaging unit	1 pc(s).
Net weight	6.8

Features

Gross weight	7.56
PCF/VE (cradle-to-gate)	27.9 kg CO2 eq (Cat B)
Information regarding the PCF class	Category B: PCF value (cradle-to-gate) calculated approximately on the basis of the product weight and self-declared
Customs tariff number	94039910
EAN	4028177929036
ETIM 9	EC000747
ECLASS 8.0	27182204

Approvals

Approvals	DNV-GL Lloyds Register of Shipping UL + C-UL (listed) UL + C-UL - FTTA
Explanations	Declaration of conformity UK