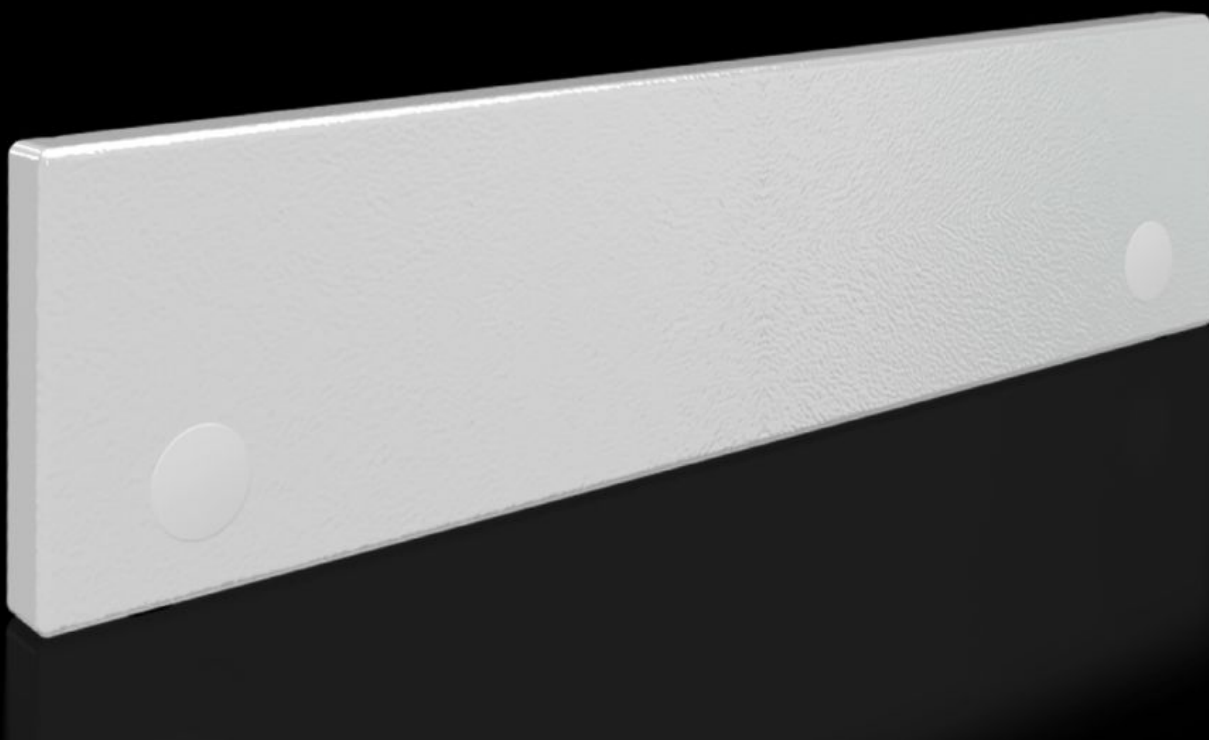
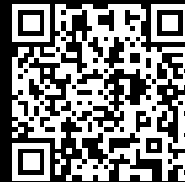


Rittal – The System.

Faster – better – everywhere.



SV 9682.314

Front trim panel, top, closed

State: 7/31/2025 (Source: rittal.com/us-en)

ENCLOSURES

POWER DISTRIBUTION

CLIMATE CONTROL

IT INFRASTRUCTURE

SOFTWARE & SERVICES

FRIEDHELM LOH GROUP



SV 9682.314 - Front trim panel, top, closed for VX

Top closure panel when partial doors are used.



Features

Model No.	SV 9682.314
Version	Solid
Product description	To finish off the modular front design at the top when using partial doors. The front trim panels may be removed from the outside by unscrewing. The cross member required for mounting is included with the supply of the mounted partial doors.
Material	Carbon steel, 1.5 mm
Surface finish	Textured paint
Color	RAL 7035
Supply includes	Assembly components
Dimensions	Height: 100 mm Height: 3.94 "
Suitable for	Width: = 400 mm Width: = 15.7 "
Packaging unit	1 pc(s).
Net weight	1
Gross weight	1.02
PCF/VE (cradle-to-gate)	3.8 kg CO2 eq (Cat B)
Information regarding the PCF class	Category B: PCF value (cradle-to-gate) calculated approximately on the basis of the product weight and self-declared

Features

Customs tariff number	83024200
EAN	4028177929630
ETIM 9	EC000456
ECLASS 8.0	27142423

Approvals

Approvals	UL + C-UL (listed) UL + C-UL - FTTA
Explanations	Declaration of conformity Declaration of conformity UK