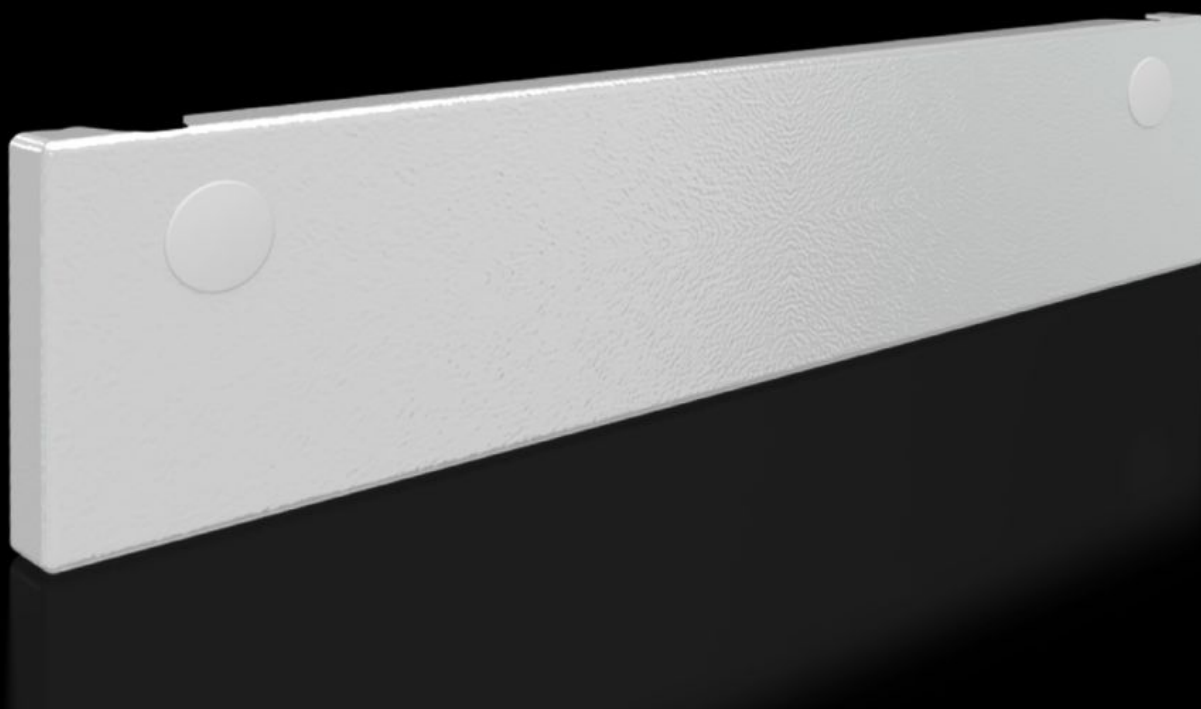


Rittal – The System.

Faster – better – everywhere.



SV 9682.334

Front trim panel, lower, closed

State: 8/29/2025 (Source: [rittal.com/us-en](https://www.rittal.com/us-en))

ENCLOSURES

POWER DISTRIBUTION

CLIMATE CONTROL

IT INFRASTRUCTURE

SOFTWARE & SERVICES

FRIEDHELM LOH GROUP



SV 9682.334 - Front trim panel, lower, closed for VX

Bottom closure panel when partial doors are used.

Features

Model No.	SV 9682.334
Version	Closed
Product description	To finish off the modular front design at the bottom when using partial doors. The front trim panels may be removed from the outside by unscrewing.
Material	Carbon steel, 1.5 mm
Surface finish	Textured paint
Color	RAL 7035
Supply includes	Front trim panel Cross member Assembly components
Dimensions	Height: 100 mm Height: 3.94 "
Suitable for	Width: = 400 mm Width: = 15.7 "
Packaging unit	1 pc(s).
Net weight	1.3
Gross weight	1.362
PCF/VE (cradle-to-gate)	5.2 kg CO2 eq (Cat B)
Information regarding the PCF class	Category B: PCF value (cradle-to-gate) calculated approximately on the basis of the product weight and self-declared
Customs tariff number	83024200
EAN	4028177929791
ETIM 9	EC000456
ECLASS 8.0	27142423

Approvals

Approvals

DNV-GL
Lloyds Register of Shipping
UL + C-UL (listed)
UL + C-UL - FTTA

Explanations

Declaration of conformity
Declaration of conformity UK