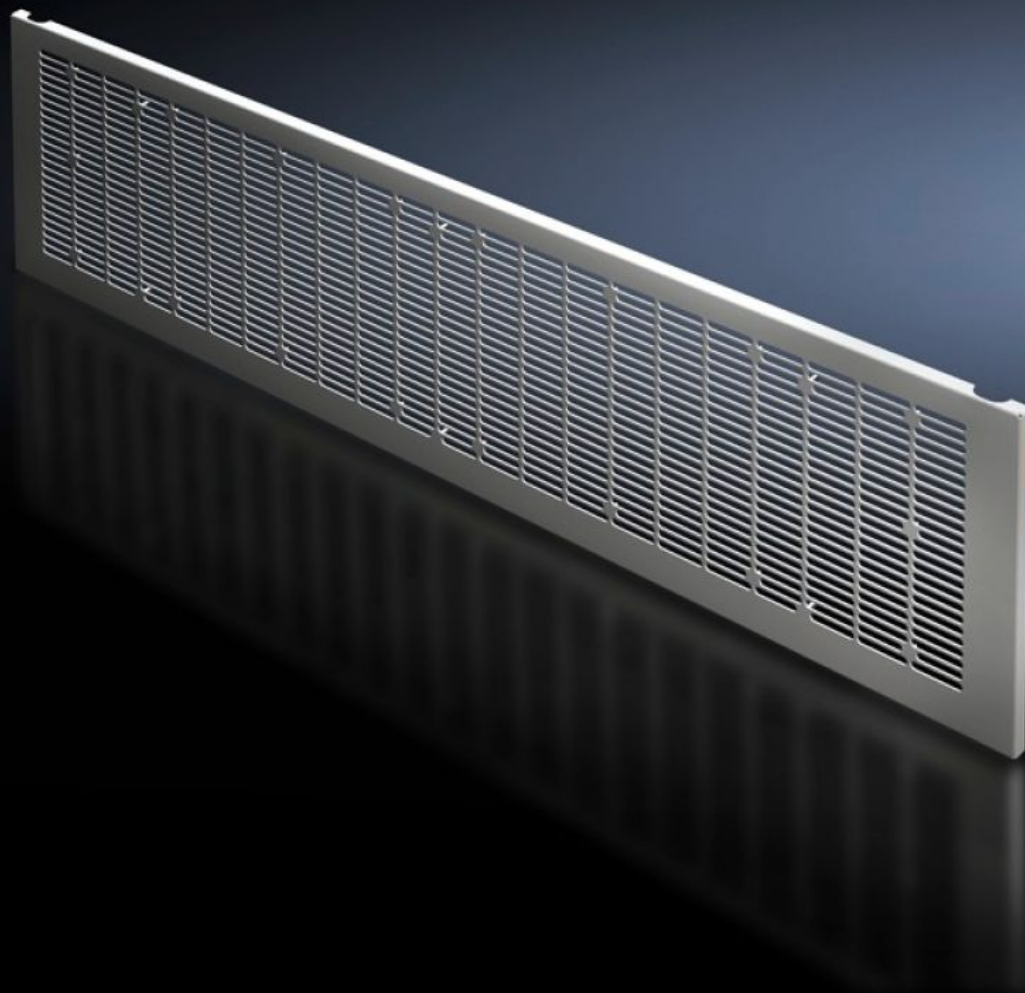
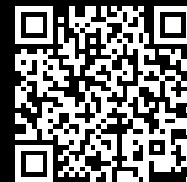


Rittal – The System.

Faster – better – everywhere.



VX 9682.350

Front trim panel, lower, ventilated

State: 8/28/2025 (Source: [rittal.com/us-en](https://www.rittal.com/us-en))

ENCLOSURES

POWER DISTRIBUTION

CLIMATE CONTROL

IT INFRASTRUCTURE

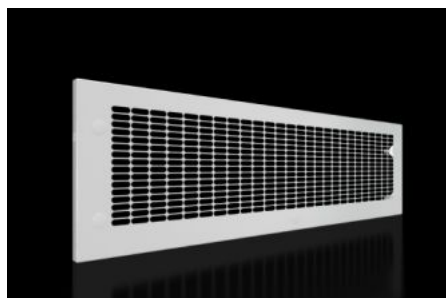
SOFTWARE & SERVICES

FRIEDHELM LOH GROUP



VX 9682.350 - Front trim panel, lower, ventilated for VX

Bottom closure panel when partial doors are used.



Features

Model No.	VX 9682.350
Version	with louvres
Product description	To finish off the modular front design at the bottom when using partial doors. The front trim panels may be removed from the outside by unscrewing.
Material	Carbon steel, 1.5 mm
Surface finish	Textured paint
Color	RAL 7035
Supply includes	Front trim panel Cross member Assembly components
Note	When using the IP 2X front trim panels, select a roof plate with protection category IP 2X for top ventilation.
Dimensions	Height: 300 mm Height: 11.8 "
Suitable for	Width: = 1,000 mm Width: = 39.4 "
Packaging unit	1 pc(s).
Net weight	3.88
Gross weight	4.28

Features

PCF/VE (cradle-to-gate)	16.3 kg CO2 eq (Cat B)
Information regarding the PCF class	Category B: PCF value (cradle-to-gate) calculated approximately on the basis of the product weight and self-declared
Customs tariff number	83024200
EAN	4028177929838
ETIM 9	EC000456
ECLASS 8.0	27142423

Approvals

Explanations	Declaration of conformity Declaration of conformity UK
--------------	---