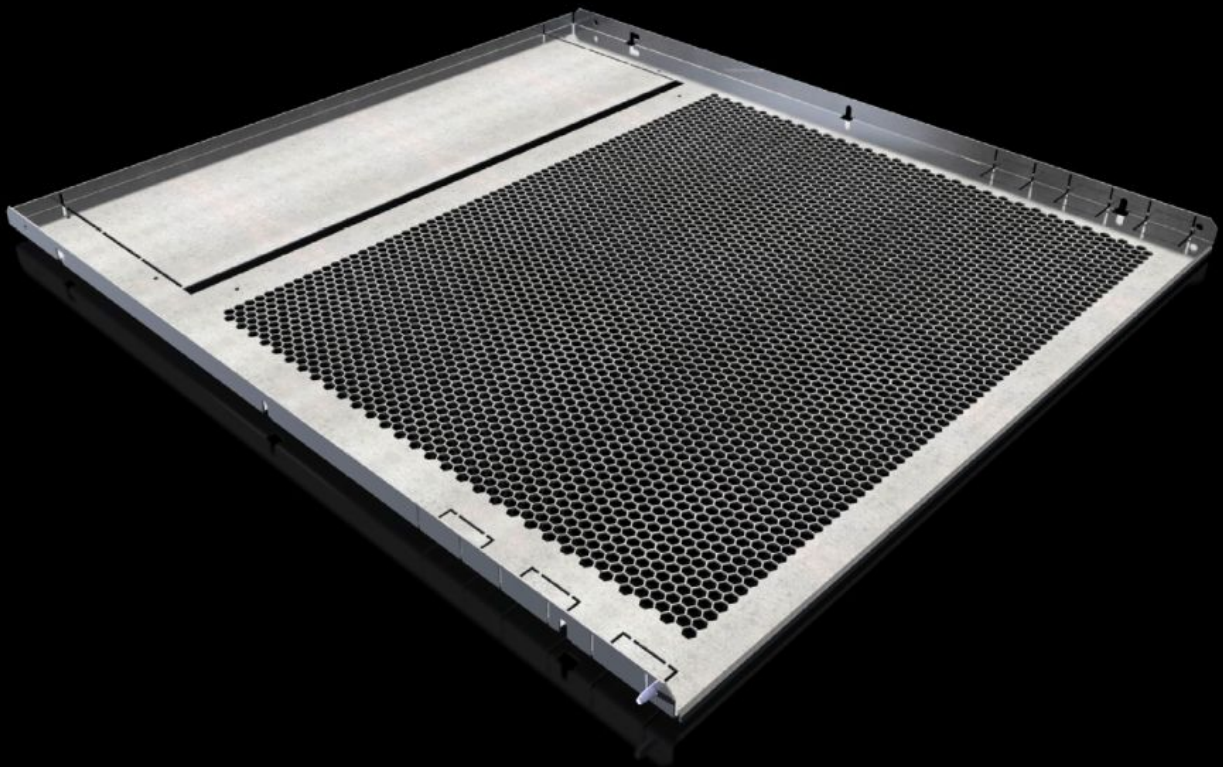


Rittal – The System.

Faster – better – everywhere.



SV 9683.488 Compartment Divider

State: 5/13/2026 (Source: rittal.com/us-en)

ENCLOSURES

POWER DISTRIBUTION

CLIMATE CONTROL

IT INFRASTRUCTURE

SOFTWARE & SERVICES

FRIEDHELM LOH GROUP



SV 9683.488 - Compartment Divider for VX

For the horizontal separation of compartments.

Features

Model No.	SV 9683.488
Version	With vent
Product description	For the horizontal separation of compartments. In combination with the side walls, creates a form separation in accordance with Forms 1 to 4. It is fastened to the compartment side wall or to the enclosure section. The integrated cut-outs with pre-punched knock-out options are used for the vertical routing of control lines or cable ducts and for the routing of distribution busbars or connection kits.
Material	Carbon steel, 1.5 mm
Surface finish	Zinc-plated
Supply includes	Assembly components
Mounting tip	For assembling compartments as internal Form separation, compartment side panels are required.
Dimensions	Width: 711 mm Depth: 780 mm Width: 28 " Depth: 30.7 "
Suitable for	Width: = 800 mm Depth: = 800 mm Width: = 31.5 " Depth: = 31.5 "
Packaging unit	2 pc(s).
Net weight	8.5 kg
Gross weight	9.12 kg
PCF/VE (cradle-to-gate)	35.1 kg CO2 eq (Cat B)
Information regarding the PCF class	Category B: PCF value (cradle-to-gate) calculated approximately on the basis of the product weight and self-declared

Features

Customs tariff number	94039910
ETIM 9	EC002525
ECLASS 8.0	27400613
Product description	SV Compartment divider, WD: 711x780 mm, for VX (WD: 800x800 mm)

Approvals

Approvals	Lloyds Register
Explanations	Declaration of conformity UK